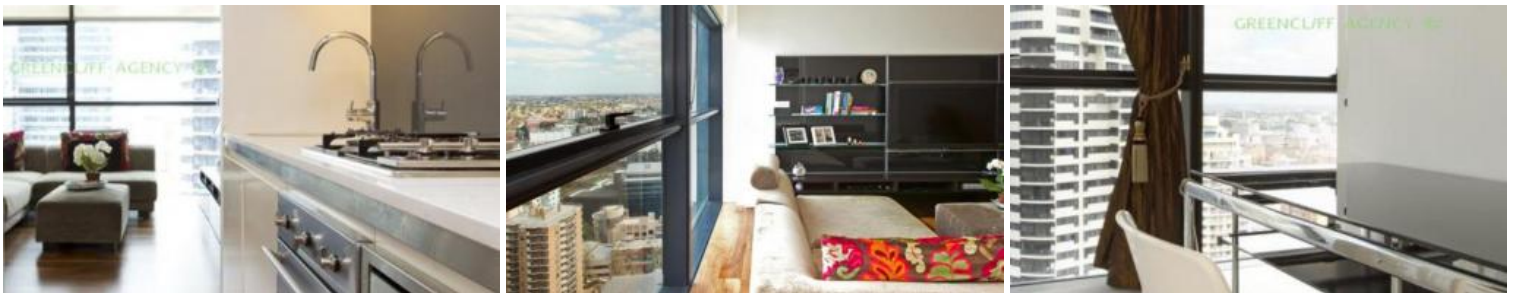


Leased



L40, 101 Bathurst Street, Sydney

GREENCLIFF AGENCY ©



CONTACT AGENT FOR INSPECTION

Featuring dark timber wooden floorboards throughout living areas, combined lounge & dining area leading to expansive city skyline views.

Large main bedroom with ensuite, large separate enclosed study room, ample lounge and dining space

Apartment also boasts modern kitchen facilities with dishwasher, grand bathroom, floor to ceiling glass windows, internal laundry with dryer, one security undercover carspace and unlimited access to Club Lumiere.

- 24-hour concierge reception
- 56 level residential tower
- Dramatic three-storey glass atrium lobby
- First class spacious & well equipped gym
- Fulltime monitored security surveillance cameras
- Fully ducted climate-controlled air-conditioning

For further information or to inspect, please contact Michael Lo on 0401 973 703 or 8823 8818.

(**Photos may be indicative)

The above information provided has been furnished to us by the vendor/s. We have not verified whether or not that information is accurate and do not have any belief in one way or the other in its accuracy. We do not accept any responsibility to any person for its accuracy and do no more than pass it on. All interested parties should make and rely upon their own inquiries in order to determine whether or not this information is in fact accurate.

🛏 2 📶 2 🚗 1

Price	\$1250 p/w
Property Type	Rental
Property ID	964

Agent Details

William Chen - 0430 026 436
william@greenclyff.com.au

Office Details

Greenclyff Sydney Kent St
Level 10/488 Kent Street Sydney NSW
2000 Australia
02 8823 8818

greenclyff
Inner city specialists