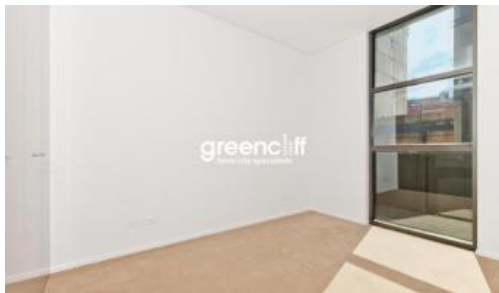


Leased

greenciff  
inner city specialists

### 3 Park Lane, Chippendale



INSPECTION: WEDNESDAY 18 MAY 2016 AT 4:30PM

Please meet at our office 5 Carlton Street, Chippendale a few minutes early to register and inspect.

Be very impressed with this near new 1 bedroom terrace style apartment with its own private entrance

The apartment features

- Private front courtyard
- Near new kitchen with gas cooking, dishwasher and fridge
- Balcony with park views
- Large double sized bedroom with built ins
- Separate study area
- Ducted air conditioning throughout
- Internal laundry with washing machine and dryer
- High ceilings throughout

Park Lane features

- Private roof top area with BBQ's and spa
- 24 hour concierge/security

All of these within Central Park which features parklands, shopping centre and within walking distance to local universities and the CBD

For more information or to inspect, please call Nana Huang on 0402 653 919 or 9199 6555

1 1

**Price**

P.O.A.

**Property Type**

Rental

**Property ID**

959

#### Agent Details

William Chen - 0430 026 436  
william@greenciff.com.au

#### Office Details

Greenciff Sydney Kent St  
Level 10/488 Kent Street Sydney NSW  
2000 Australia  
02 8823 8818

greenciff  
Inner city specialists

\*\* images used maybe indicatives only\*\*