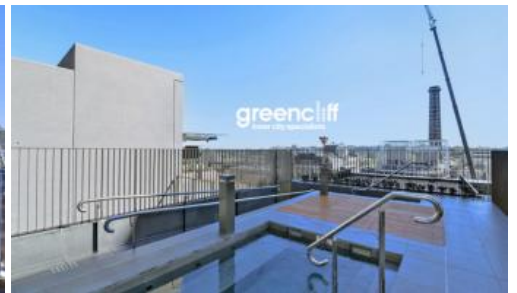


Leased

greenciff
Inner city specialists

1-5 Park Lane, Chippendale



INSPECT: WEDNESDAY 19TH FEBRUARY 4:00-6:00PM

BRAND NEW ONE BEDROOM NOW AVAILABLE!

The Park Lane apartments are an integral part of the wildly popular Central Park development. The new building offers prime positioning with views overlooking the Chippendale Green Parklands while being minutes away from the Sydney CBD.

This property features:

- Brand new low rise apartments
- Central to public transport
- Close proximity to universities & TAFE (UTS, Sydney University, Notre Dame)
- Air conditioning & heating
- Built in wardrobes
- Whitegoods included, SMEG kitchen appliances
- Storage cage included with all apartments
- 24hour concierge & security
- Fitness club with pool, gym & spa
- 6 level shopping centre located at your doorstep
- Cafes, alfresco dining, Melbourne-style lane ways and public art spaces stone throws away
- Communal rooftop decking with BBQ and spa facilities

For more information or arrange a private viewing, please contact Eugene Ganke on 0404 010 555

For more information on the development: www.centralparksydney.com.au
For more information and properties in the area: www.greenciff.com.au

🛏 1 🏠 1

Price	\$580 p/w
Property Type	Rental
Property ID	951

Agent Details

William Chen - 0430 026 436
william@greenciff.com.au

Office Details

Greenciff Sydney Kent St
Level 10/488 Kent Street Sydney NSW
2000 Australia
02 8823 8818

greenciff
Inner city specialists