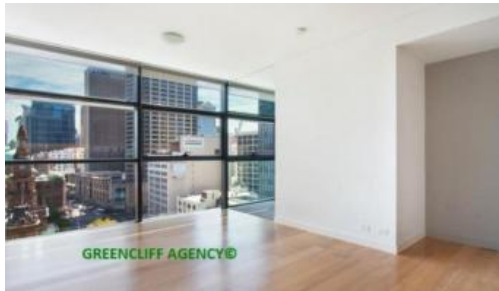


Leased



**L30, 101 Bathurst Street, Sydney**

GREENCLIFF AGENCY®



GREENCLIFF AGENCY®



GREENCLIFF AGENCY®



GREENCLIFF AGENCY®

**DEPOSIT TAKEN - CONTACT AGENT**

Private Inspections Welcome

Located in the heart of Sydney's iconic Town Hall precinct, Lumiere at Regent Place is a residential village in the sky.

The apartment features

- Timber flooring throughout
- Roughly 67sqm with built in robe
- Modern kitchen & bathroom facilities
- Internal laundry
- Internal loggia
- Ducted air conditioning
- Secure parking space
- Full access to Club Lumiere and building facilities

Facilities include access to spectacular indoor/outdoor 50 & 20 metre pool, sauna, spa, gym, function room & 2 cinemas.

Please call Shalini Vashista for more information or arrange for a private viewing 0421 640 010 and 8823 8818

(Photos may be indicative)

The above information provided has been furnished to us by the vendor/s. We have not verified whether or not that information is accurate and do not have any belief in one way or the other in its accuracy. We do not accept any responsibility to any person for its accuracy and do no more than pass it on. All interested parties should make and rely upon their own inquiries in order to determine whether or not this information is in fact accurate.

🛏 1 🚿 1 🚗 1

**Price**

P.O.A.

**Property Type**

Rental

**Property ID**

942

**Agent Details**

William Chen - 0430 026 436

[william@greenciff.com.au](mailto:william@greenciff.com.au)

**Office Details**

Greenciff Sydney Kent St

Level 10/488 Kent Street Sydney NSW

2000 Australia

02 8823 8818

**greenciff**  
Inner city specialists