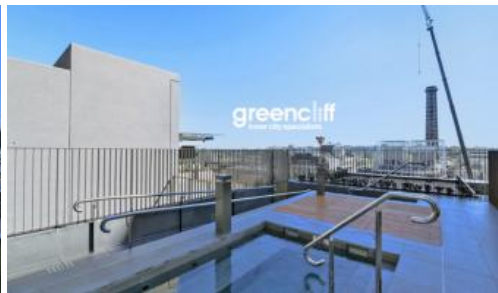


Leased

greenciff  
Inner city specialists

## 1-5 Park Lane, Chippendale



INSPECT: WEDNESDAY 18TH DECEMBER 5.00 - 6.00PM

BRAND NEW ONE BEDROOM APARTMENTS WITH PARKING!

GAS & ELECTRICITY INCLUDED IN RENT

Meeting Point - 3 Carlton Street, Chippendale

The Park Lane apartments are an integral part of the wildly popular Central Park development. The new building offers prime positioning with views overlooking the Chippendale Green parklands while being minutes away from the Sydney CBD.

This property features:

- Brand new low rise apartments
- Central to public transport
- Close proximity to universities & TAFE (UTS, Sydney University, Notre Dame)
- Air conditioning & heating
- Built in wardrobes
- Whitegoods included, SMEG kitchen appliances
- Storage cage included with all apartments
- 24hour concierge & security
- Fitness club with pool, gym & spa
- 6 level shopping centre located at your doorstep
- Cafes, alfresco dining, Melbourne-style lane ways and public art spaces stone throws away
- Communal rooftop decking with BBQ and spa facilities

For more information or arrange a private viewing please contact Eugene Ganke on

🛏 1 🏠 1 🚗 1

<b>Price</b>	\$680 p/w
<b>Property Type</b>	Rental
<b>Property ID</b>	941

### Agent Details

William Chen - 0430 026 436  
william@greenciff.com.au

### Office Details

Greenciff Sydney Kent St  
Level 10/488 Kent Street Sydney NSW  
2000 Australia  
02 8823 8818

greenciff  
Inner city specialists