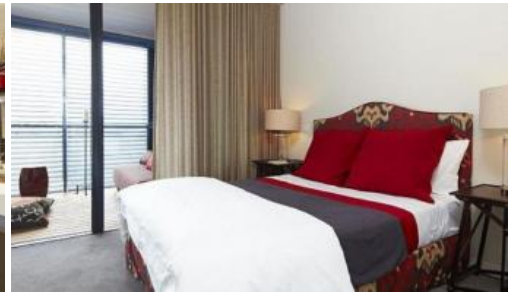


Leased



1004, 3 Sterling Circuit, Camperdown



"TRIO" TWO BEDROOM APARTMENT WITH CAR SPACE

Perfectly positioned on the tenth floor of the Central building of sought after Trio is this fabulous two bedroom apartment. Boasting an easterly aspect and extensive views this apartment oozes relaxation and ambience. Features include:

- Gourmet kitchen with European gas appliances and dishwasher
- Open plan living flowing to timber loggia, ideal for alfresco entertaining
- Two large bedrooms, built-in wardrobes, ensuite bathroom
- Superb finishes throughout, internal laundry, reverse air conditioning
- Security building with car space and lift access

Being in The City Quarter Complex you will be able to enjoy the free, unlimited access to your choice of a 50 metre outdoor or 25m indoor pool and two gymnasiums. The complex also has 24 hour security, a Japanese restaurant, cafe & convenience store.

Only a 10 minute bus ride to the city or an easy stroll to Glebe, Broadway, Leichhardt and Newtown which are just around the corner.

The above information provided has been furnished to us by the vendor/s. We have not verified whether or not that information is accurate and do not have any belief in one way or the other in its accuracy. We do not accept any responsibility to any person for its accuracy and do no more than pass it on. All interested parties should make and rely upon their own inquiries in order to determine whether or not this information is in fact accurate.

🛏 2 📶 2 🚗 1

Price	\$900 p/w
Property Type	Rental
Property ID	926

Agent Details

William Chen - 0430 026 436
william@greenciff.com.au

Office Details

Greenciff Sydney Kent St
Level 10/488 Kent Street Sydney NSW
2000 Australia
02 8823 8818

greenciff
Inner city specialists