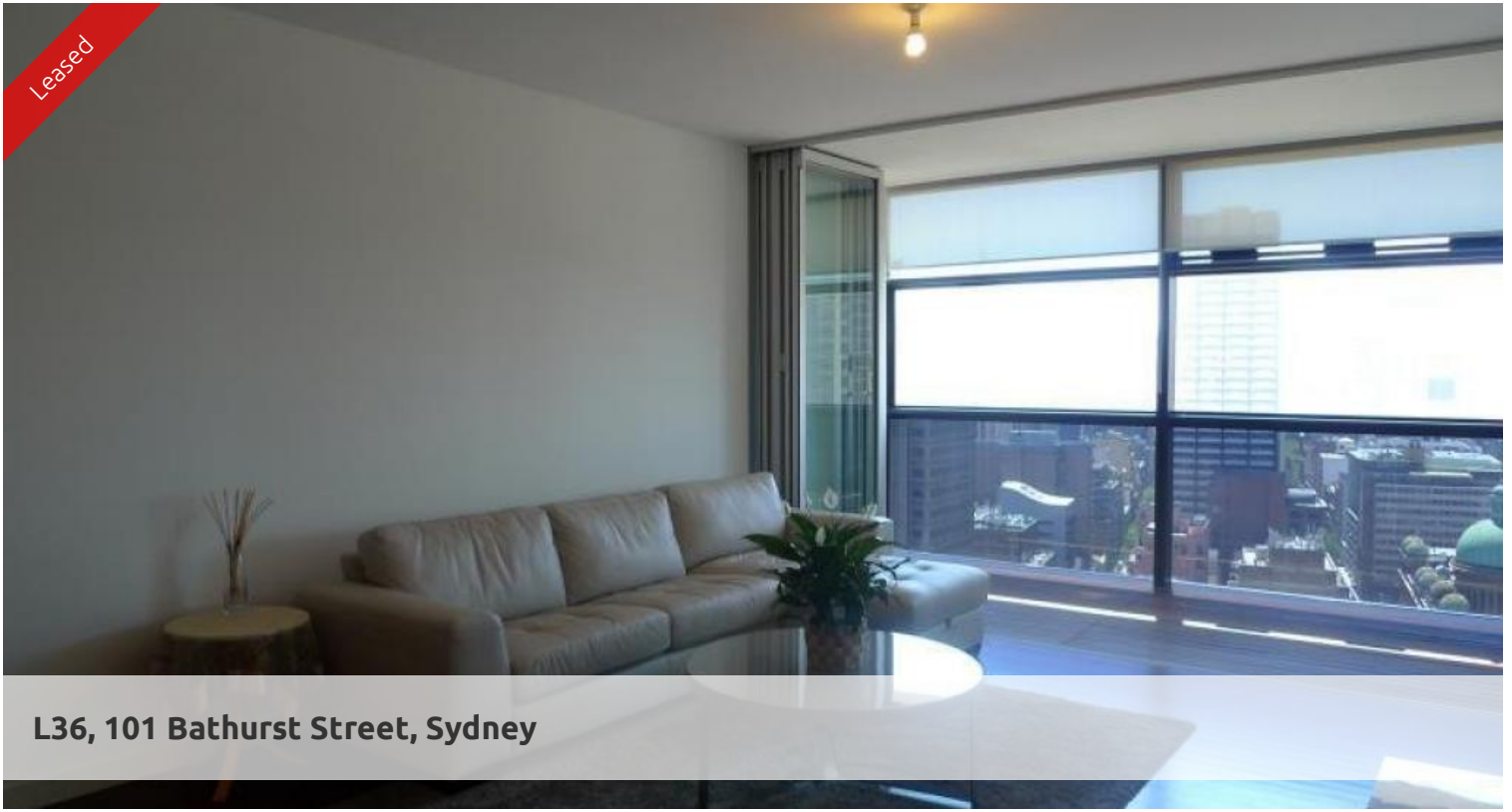
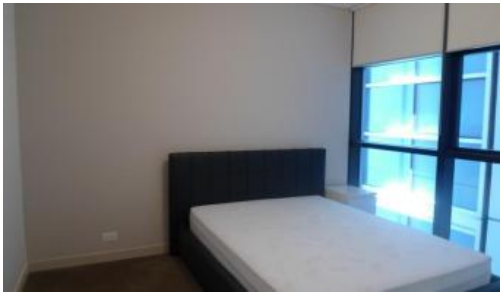


Leased



L36, 101 Bathurst Street, Sydney



DEPOSIT TAKEN - CONTACT AGENT

Beautifully presented two bedroom apartment located on level 36 of one of Sydney's finest residential buildings.

You will love:

- Spacious combined lounge and dining area which enjoy views over Darling Harbour and Wollomoolloo..
- Open plan kitchen with gas cooking, plenty of storage and drawer dishwasher
- 2 double sized bedrooms, both with built-in wardrobes with main featuring ensuite with bath tub.
- Floor to ceiling windows
- Internal laundry
- Spacious study area

You will stay for the:

The Lumiere Residences features 2 levels of private residential facilities including a 50 metre swimming pool spanning indoor to outdoor, a comprehensive first class gym, yoga/games room, 2 cinemas, meeting area and 24 hour concierge/security

For further information or to inspect, please call Shalini Vashistha 0421 640 010 or 8823 8818

*Photographs used may be indicative.

The above information provided has been furnished to us by the vendor/s. We have not verified whether or not that information is accurate and do not have any belief in one way or the other in its accuracy. We do not accept any responsibility to any person for its accuracy and do no more than pass it on. All interested parties should make and rely upon their own inquiries in order to determine whether or not this information is in fact accurate.

 2  2  1

Price

P.O.A.

Property Type

Rental

Property ID

911

Agent Details

William Chen - 0430 026 436
william@greycliff.com.au

Office Details

Greycliff Sydney Kent St
Level 10/488 Kent Street Sydney NSW
2000 Australia
02 8823 8818

greycliff
Inner city specialists