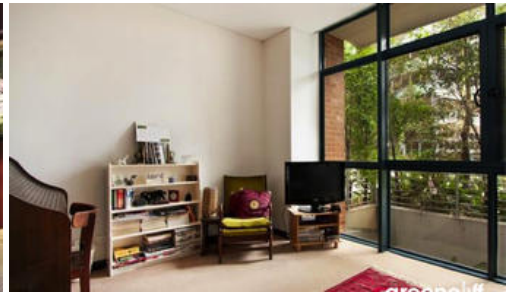


Leased



89, 10 Pyrmont Bridge Road, Camperdown



"ETAGE" ONE BEDROOM APARTMENT WITH CAR SPACE

ALL FURTHER INSPECTIONS CANCELLED

Light and airy one bedroom apartment situated in sought after "Etagé" within The City Quarter complex. Features include:

- Modern kitchen with gas cook top and dishwasher
- Spacious living area with polished timber floors
- Generous bedroom with built in wardrobes
- Sun-drenched balcony, internal laundry
- Security building with lift and car space

Being in The City Quarter Complex you will be able to enjoy the free, unlimited access to your choice of a 50 metre outdoor or 25m indoor pool and two gymnasiums. The complex also has 24 hour security, a Japanese restaurant, cafes & convenience store.

Only a 10 minute bus ride to the city or an easy stroll to Glebe, Broadway, Leichhardt and Newtown which are just around the corner.

For further information, please contact Nicole Guibani on 0435 127 552.

**Please note, images shown may be indicatives only.

The above information provided has been furnished to us by the vendor/s. We have not verified whether or not that information is accurate and do not have any belief in one way or the other in its accuracy. We do not accept any responsibility to any person for its accuracy and do no more than pass it on. All interested parties should make and rely upon their own inquiries in order to determine whether or not this information is in fact accurate.

🛏 1 🚿 1 🚗 1

Price L1/10 Pyrmont Bridge Road |
DEPOSIT TAKEN

Property Type rental

Property ID 908

Agent Details

Michelle Vejar - 0419 777 239
michelle@greencliff.com.au

Office Details

Greencliff Camperdown Office
Shop 1 1 Sterling Cct Camperdown NSW
2050 Australia
02 8262 8262

greenciff
Inner city specialists