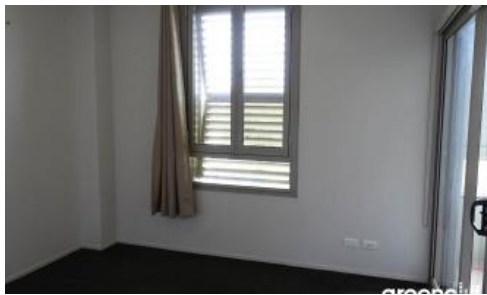


Leased



Camperdown



"VIE 4" TWO BEDROOM APARTMENT WITH CAR SPACE!

ALL FURTHER INSPECTIONS CANCELLED

Fabulous two bedroom apartment situated within Vie 4 offering a sophisticated lifestyle in a convenient location. Features include:

- Spacious living space with a massive, unique timber loggia
- Superb flow of indoor/outdoor living, perfect for entertaining
- Gourmet kitchen with stone bench and Smeg appliances
- Generous bedrooms, master with ensuite bathroom, built in robes
- Internal laundry with dryer, undercover security car space

Superbly located within the City Quarter complex, comprising of 50 metre outdoor pool, 25m indoor pool, two gymnasiums and the added convenience of 24 hour security, restaurant, café and convenience store.

A short bus ride from the city or an easy stroll to Annandale shopping village, Glebe, Broadway, Leichhardt and Newtown, all just around the corner.

Lease period: 6-12 months

For inspections please buzz #4303

For more information, please call Nicole Guibani on 0435 127 552.

The above information provided has been furnished to us by the vendor/s. We have not verified whether or not that information is accurate and do not have any belief in one way or the other in its accuracy. We do not accept any responsibility to any person for its accuracy and do no more than pass it on. All interested parties should make and rely upon their own inquiries in order to determine whether or not this information is in fact accurate.

 2  2  1

Price L3 6 Alexandra Drive |
DEPOSIT TAKEN

Property Type Rental

Property ID 765

Agent Details

Michelle Kilala - 0419 777 239
michelle@greenciff.com.au

Office Details

Greenciff Camperdown Office
Shop 1 1 Sterling Cct Camperdown NSW
2050 Australia
02 8262 8262

greenciff
Inner city specialists