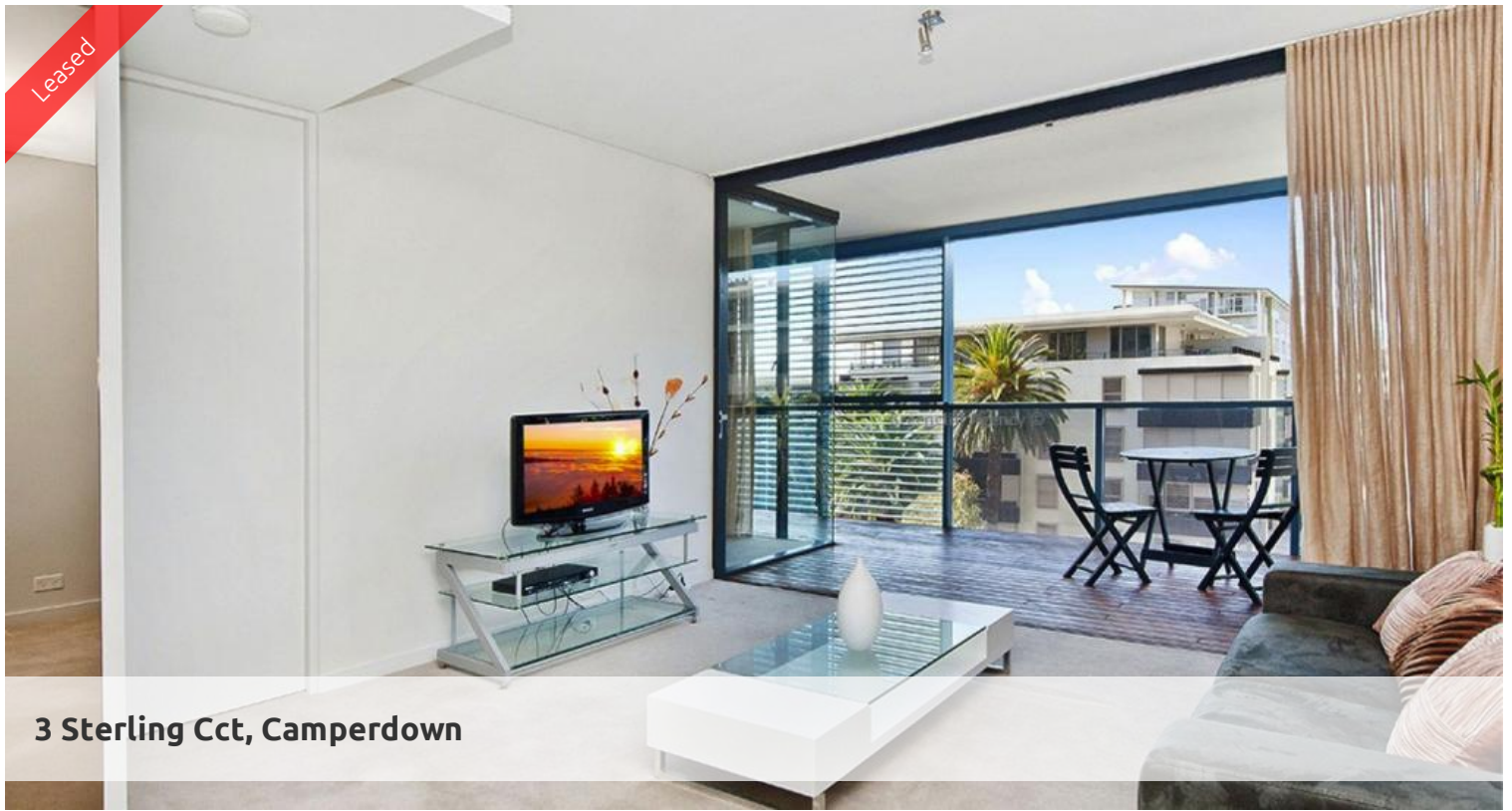
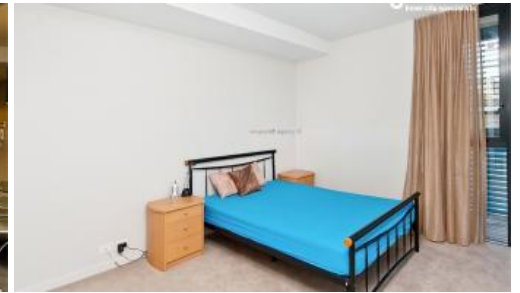


Leased



3 Sterling Cct, Camperdown



ONE BEDROOM APARTMENT IN TRIO WITH EAST FACING

Occupying an elevated site on the corner of Booth Street and Pyrmont Bridge Road, Camperdown, Trio is a bold and brilliant addition to the landscape.

Trio combines the cosmopolitan culture and accessibility of the Inner West with all the benefits of living spaces designed for the most modern of lifestyles.

Sculptural gardens infiltrate the foyer, meshing the building with its environment. Inside the story is equally modern, loggias which enhance and add flexibility to the open plan.

Trio is just a 10 minutes bus ride to Sydney CBD, with major universities, RPA Hospital, Broadway Shopping Centre, Annandale shopping village, Glebe, Tramsheds, Jubilee Park and transport all within walking distance.

Apartment features:

- Spacious living area boasting tranquil leafy outlook
- Modern kitchen with gas cook top and dishwasher
- Private loggia with timber decking, ideal for alfresco entertaining
- Large bedroom with built-in wardrobe, light and airy throughout
- Bathroom with separate bath and shower
- Undercover security carspace, visitors parking and lift access
- Ducted air conditioning

Enjoy unlimited access to your choice of a 50 metre outdoor or 25m indoor pool and two gymnasiums. The complex also has 24 hour security, and restaurants.

** images used maybe indicatives only**

🛏 1 📶 1 🚗 1

Price

Level 5 | \$850 PW | Deposit Taken

Property Type

Rental

Property ID 7407

Agent Details

Tammy (Rungnapa) Kanittanon - 0431 511 907 tammy@greenciff.com.au

Office Details

Greenciff Camperdown Office
Shop 1 1 Sterling Cct Camperdown NSW
2050 Australia
02 8262 8262

greenciff
Inner city specialists

The above information provided has been furnished to us by the vendor/s. We have not verified whether or not that information is accurate and do not have any belief in one way or the other in its accuracy. We do not accept any responsibility to any person for its accuracy and do no more than pass it on. All interested parties should make and rely upon their own inquiries in order to determine