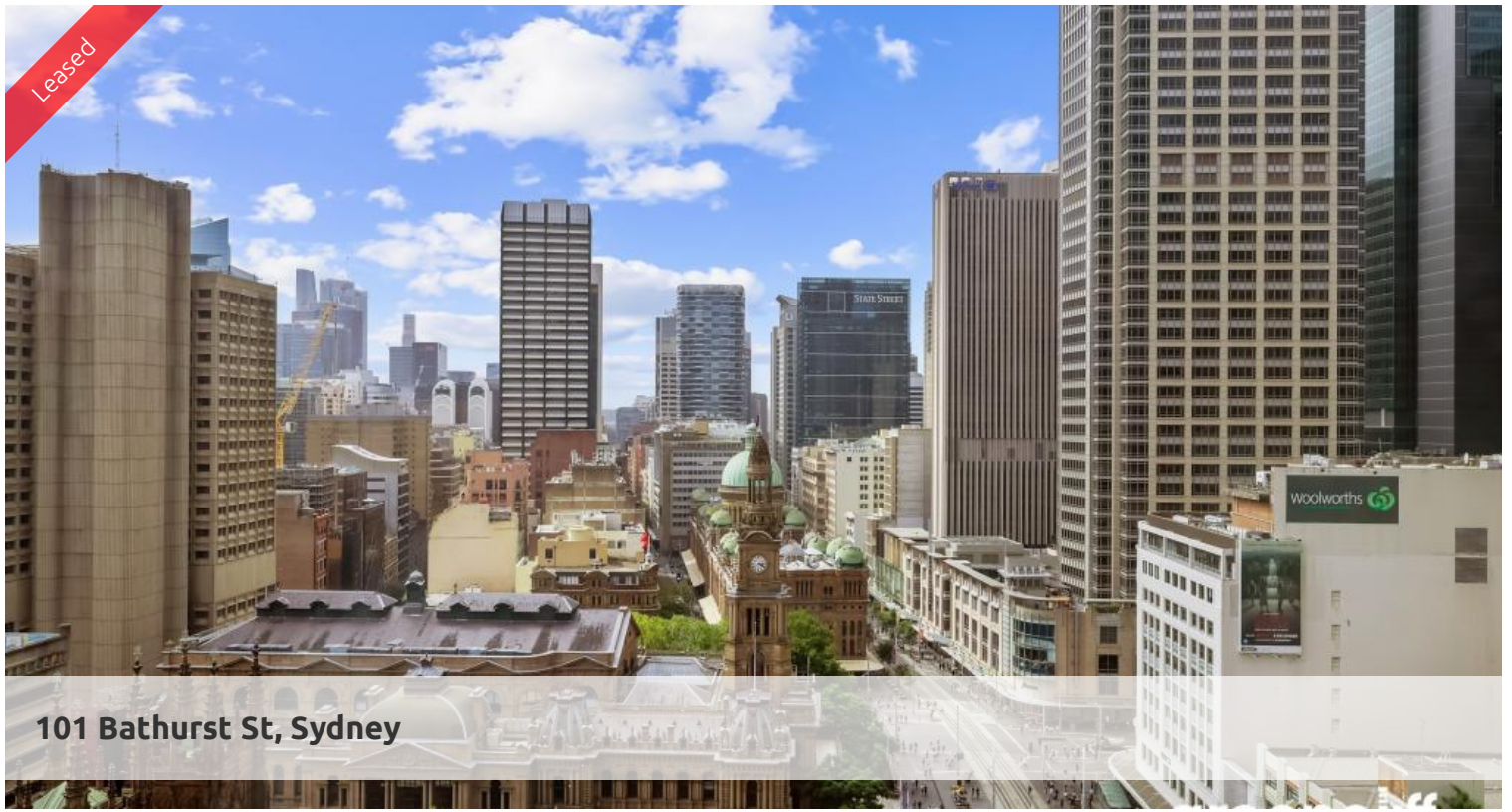
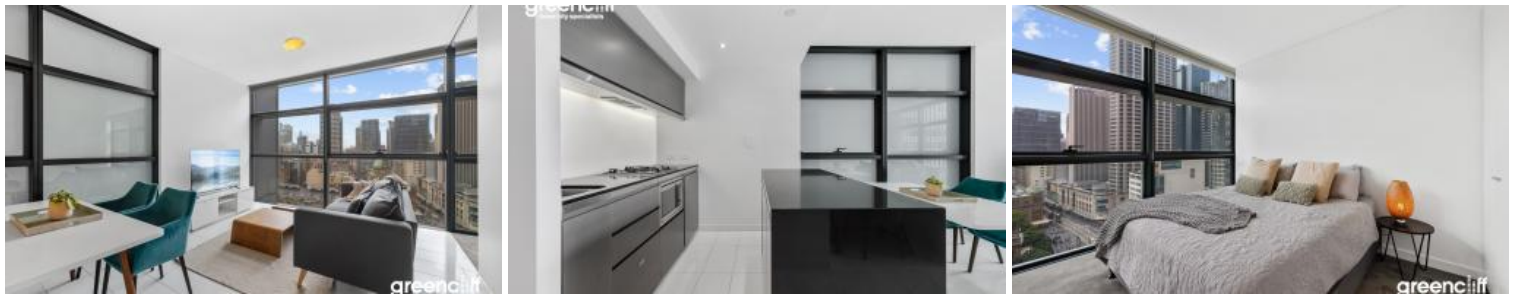


Leased



## 101 Bathurst St, Sydney



### Fully furnished one bedroom North Facing

Located in the heart of Sydney's iconic Town Hall precinct, Lumiere at Regent Place is a residential village in the sky.

The apartment features

- Stone flooring throughout
- Fully Furnished
- Roughly 55sqm with built in robe
- Modern kitchen & bathroom facilities
- Internal laundry
- Ducted air conditioning
- Secure parking space
- Full access to Club Lumiere and building facilities

Facilities include access to spectacular indoor/outdoor 50 & 20 metre pool, sauna, spa, gym, function room & 2 cinemas.

The above information provided has been furnished to us by the vendor/s. We have not verified whether or not that information is accurate and do not have any belief in one way or the other in its accuracy. We do not accept any responsibility to any person for its accuracy and do no more than pass it on. All interested parties should make and rely upon their own inquiries in order to determine whether or not this information is in fact accurate.

🛏 1 📶 1 🚗 1

#### Price

Level 27 | \$1050 PW |  
Deposit Taken

#### Property Type

Rental

#### Property ID

7338

#### Agent Details

Tammy (Rungnapa) Kanittanon - 0431  
511 907 tammy@greenciff.com.au

#### Office Details

Greenciff Sydney Kent St  
Level 10/488 Kent Street Sydney NSW  
2000 Australia  
02 8823 8818

**greenciff**  
Inner city specialists