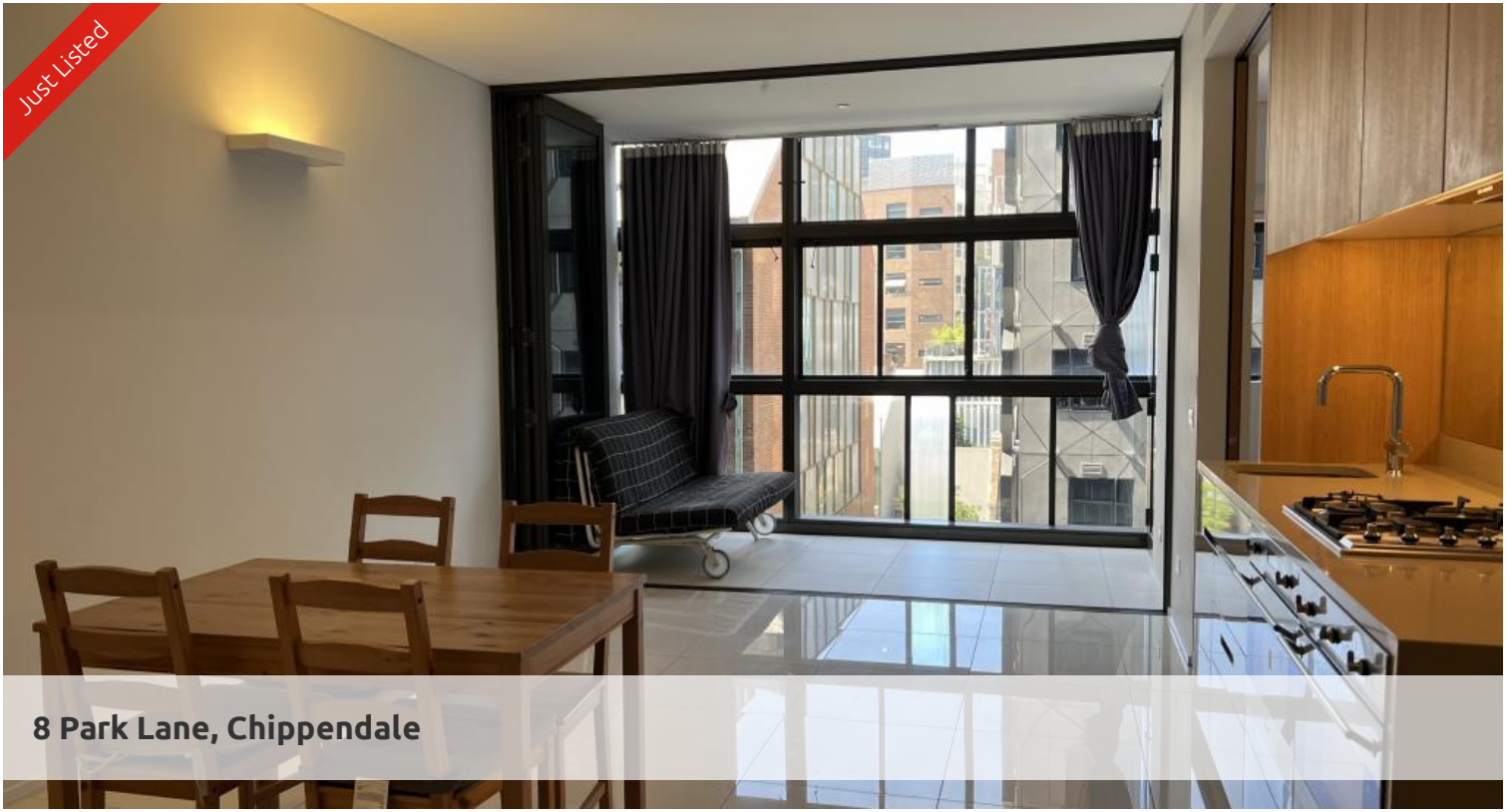


Just Listed



8 Park Lane, Chippendale



MODERN & FURNISHED ONE BEDROOM IN CENTRAL PARK

Please meet at our office at 5 Carlton St, Chippendale a few minutes before to register and inspect.

Greencliff - Official On-Site Rental Management Team for Central Park!

One Central Park is inner city living at its best!

Enjoy the convenience of shopping, entertainment, dining and transport right at your doorstep. Built around a beautiful park, One Central Park is the perfect combination of luxury meeting nature.

Rich in amenities, this Central Park development features:

- Luxury apartments with stainless steel appliances
- Security building with 24 hour concierge
- Fitness centre with pool, gymnasium & spa
- Bonus of a rooftop BBQ area & spa
- 6 star green rated development
- 5 level shopping centre with Woolworths
- City, district or park views from all apartments

🛏 1 📶 1

Price

Level 4 | \$850 PW -
FURNISHED

Property Type

Rental

Property ID 7298

Inspection Times

Sat 23 Nov, 11:00 AM - 11:30 AM

Agent Details

Daniel Ho - 0424 089 868
daniel@greencliff.com.au

Office Details

Greencliff Central Park Office
101/5 Carlton Street Chippendale NSW
2008 Australia
02 9199 6555

greenc  **ff**
Inner city specialists