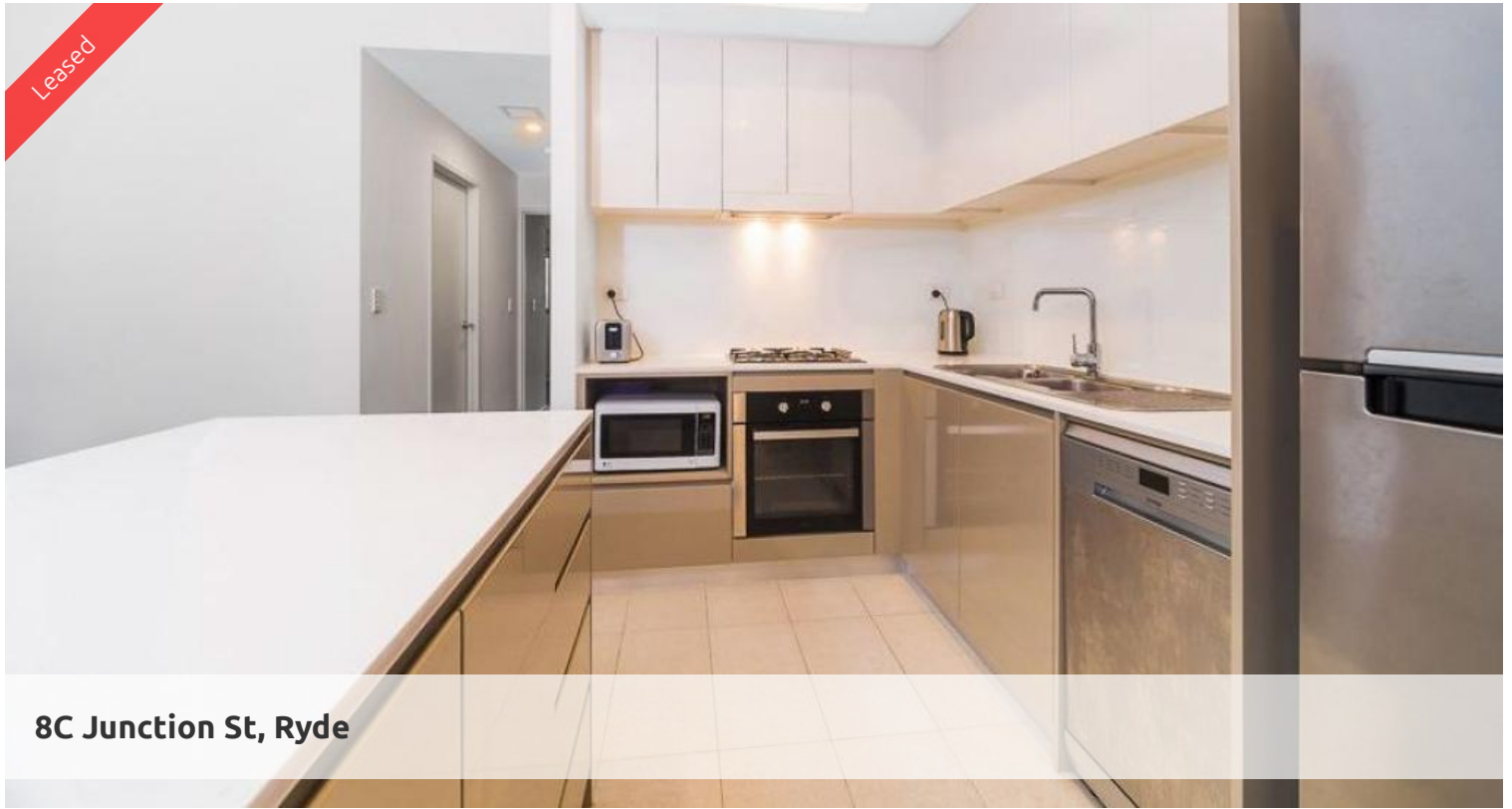
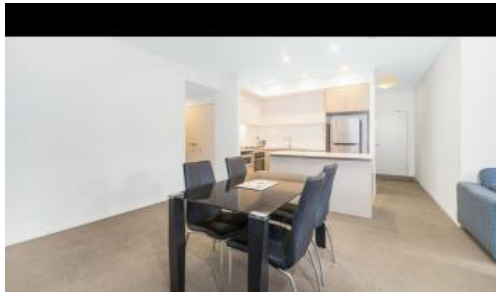


Leased



8C Junction St, Ryde



SPACIOUS 2 BEDROOM WITH PARKING!

🛏 2 📶 2 🚗 1

This sunny, bright, and spacious 2-bedroom apartment is sitting on level 2 of the Crowle Estate development, which offers serene natural surrounds with peaceful places for recreation and relaxation.

Positioned within an established community and close to transport and ferries to Sydney city, residents will enjoy the tranquility of a private enclave within easy reach of shopping, entertainment and world class sporting venues.

Features include:

- Open plan kitchen with premium appliances including dishwasher, island bench for entertaining
- Oversized Master bedroom complete with ensuite and large mirrored built-in wardrobe
- Contemporary full bathroom showcases floor-to-ceiling tiles
- Internal laundry with dryer
- Air-conditioning, NBN ready, high ceilings
- Security parking space
- Walking distance to Meadowbank station, ferry, buses and waterside
- Short drive to Top Ryde Shopping Centre, Rhodes, Olympic Park, Eastwood, and Macquarie Centre
- Pet friendly building, pets subject to owner approval

Price LEVEL 2 | \$730 PW |
DEPOSIT TAKEN

Property Type Rental

Property ID 7292

Agent Details

Tammy (Rungnapa) Kanittanon - 0431 511 907 tammy@greencliff.com.au

Office Details

Greencliff Camperdown Office
Shop 1 1 Sterling Cct Camperdown NSW
2050 Australia
02 8262 8262

greenciff
Inner city specialists

Be the first to inspect this gem.