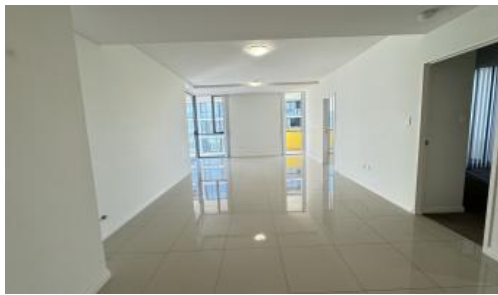




1 Church Ave, Mascot



A NEW APARTMENT COMPLEX IN THE HEART OF MASCOT

Mascot is a vibrant and growing neighborhood known for its convenience and modern lifestyle. With easy access to the city center, airport, and major highways, you'll find yourself in the heart of Sydney's action while still enjoying a peaceful residential environment.

- Three generously sized bedrooms that provide ample space for relaxation and rest.
- Two beautifully designed bathrooms with modern fixtures and finishes, creating a serene atmosphere.
- An open-concept living area that seamlessly blends the kitchen, dining, and lounge areas, perfect for entertaining guests or spending quality time with family.
- A contemporary kitchen equipped with state-of-the-art appliances, sleek countertops, and plenty of storage space for your culinary needs.
- Enjoy the convenience of two dedicated parking spaces, ensuring your vehicles are always secure and accessible.
- Step out onto your private balcony and enjoy the views of the vibrant Mascot neighborhood.

Don't miss the opportunity to call this exquisite apartment your new home. Contact us today to schedule a viewing and experience luxury living at its finest in Mascot.

For more information and to arrange a viewing, please contact **Daniel Ho - 0424 089 868**

Disclaimer: Images and descriptions are for illustrative purposes only and may not reflect the actual property.

The above information provided has been furnished to us by the vendor/s. We have not verified whether or not that information is accurate and do not have any belief in one way or the other in its accuracy. We do not accept any responsibility to any person for its

🛏 3 🚗 2 🚗 2

Price Level 9 | DEPOSIT TAKEN -
INSPECTION CANCELED

Property Type Rental

Property ID 7256

Agent Details

Daniel Ho - 0424 089 868
daniel@greenciff.com.au

Office Details

Greenciff Central Park Office
101/5 Carlton Street Chippendale NSW
2008 Australia
02 9199 6555

greenciff
Inner city specialists