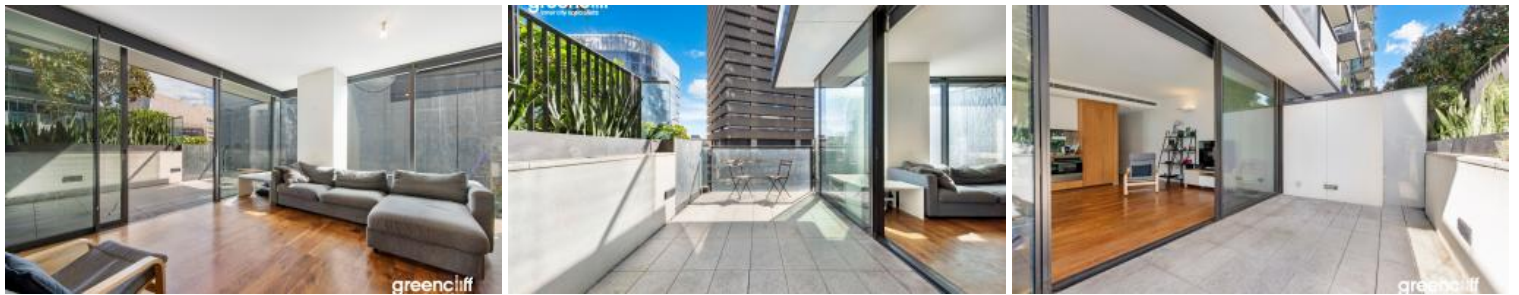




E503, 3 Carlton St, Chippendale



Iconic Luxury Living with Unbeatable Flexibility at One Central Park

Welcome to a rare opportunity at the heart of Sydney's most vibrant urban village! This versatile property combines a one-bedroom apartment with an adjoining studio, giving you endless options - live in one and rent the other, lease both separately, or merge them into a lavish two-bedroom home. Nestled in the award-winning One Central Park, this property is the ultimate fusion of nature and world-class architecture, with rooftop gardens, cutting-edge design, and unparalleled city living at your doorstep. Restaurants, bars, shopping, and entertainment are all part of your everyday playground!

Property Highlights:

- Desirable corner apartment with minimal common walls
- Configured with one massive one-bedroom and a studio apartment
- Stunning views of the Chippendale's vistas from both living and bedroom
- Warm color palette design with plush carpeted bedrooms
- Gas kitchen with stone bench top, built-in microwave oven, dishwasher, and plenty of storage cabinets
- Open plan living and kitchen with an airy ambiance
- Full length balcony perfect for entertaining
- Massive bedroom with full built-ins
- Secure building with lift access, intercom entry, concierge service, and ducted A/C
- Exclusive residents-only access to resort-style amenities, including a gym, an outdoor swimming pool and communal rooftop area

On behalf of Greycliff Realty and the owners, we are excited to invite you to one of our upcoming open homes. Alternatively, feel free to contact Danny Yeung at 0451 836 388 to arrange a private inspection.

Disclaimer: All information provided herein has been obtained from sources we consider reliable, but we cannot guarantee its accuracy. This information should not

🛏 2 📶 2 🚗 1 📏 138 m2

Price	Price Guide \$1,450,000
Property Type	Residential
Property ID	7214
Land Area	138 m2

Agent Details

Danny Yeung - 0451 836 388
danny@greycliff.com.au

Office Details

Greycliff Central Park Office
101/5 Carlton Street Chippendale NSW
2008 Australia
02 9199 6555

greenc  **iff**
Inner city specialists