

Leased



4 Alexandra Dr, Camperdown

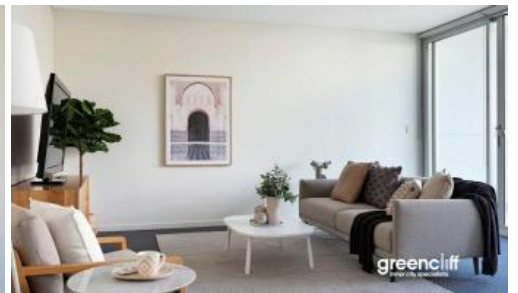
greenciff
Inner city specialists



greenciff
Inner city specialists



greenciff
Inner city specialists



greenciff
Inner city specialists

ONE BEDROOM APARTMENT WITH PARKING!

Spacious one bedroom apartment with modern kitchen and bathroom. Located on level 4 with a pleasant outlook, bright and airy.

- Extra Large open plan living and dining area with ceiling fan.
- Modern kitchen with stainless steel appliances, gas cooking and dishwasher.
- Grand balcony perfect for entertaining or relaxing.
- Stylish bathroom with bathtub.
- Bedroom with built in robes and ceiling fan.
- Internal laundry.
- Security parking.
- Property has approximately 12 square meters storage room.

Being in The City Quarter Complex you will be able to enjoy the free, unlimited access to your choice of a 50 metre outdoor or 25m indoor pool and two gymnasiums. The complex also has 24 hour security and restaurants.

Only a 10 minute bus ride to the city or an easy stroll to Tramsheds, Jubilee park, Glebe, RPA hospital, Sydney University, Broadway, Leichhardt and Newtown which are just around the corner.

** images used maybe indicatives only**

🛏 1 🚿 1 🚗 1

Price

LEVEL 4 | \$780PW | LEASED
AT FIRST OPEN

Property Type

Rental

Property ID

7213

Agent Details

Tammy (Rungnapa) Kanittanon - 0431
511 907 tammy@greenciff.com.au

Office Details

Greenciff Camperdown Office
Shop 1 1 Sterling Cct Camperdown NSW
2050 Australia
02 8262 8262

greenciff
Inner city specialists

The above information provided has been furnished to us by the vendor/s. We have not verified whether or not that information is accurate and do not have any belief in one way or the other in its accuracy. We do not accept any responsibility to any person for its accuracy and do no more than pass it on. All interested parties should make and rely upon their own inquiries in order to determine whether or not this information is in fact accurate.