

Leased

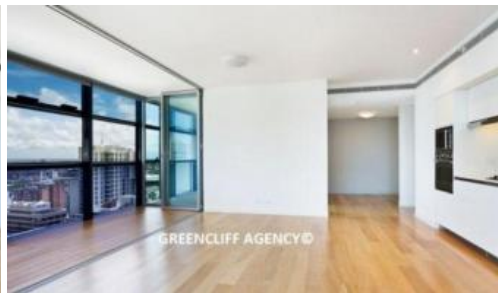


GREENCLIFF AGENCY ©

L29, 101 Bathurst Street, Sydney



GREENCLIFF AGENCY ©



GREENCLIFF AGENCY ©



GREENCLIFF AGENCY ©

INSPECT: SATURDAY 24TH JANUARY 12.15 - 12.30PM

South West Corner 2 Bedroom Apartment + Parking - Available Now

Stunning 2 bedroom apartment located on the South West corner of the Lumiere Sydney

Property boasts -

- Timber floorboards in lounge and dining area, carpet in bedrooms
- Modern kitchen facilities with dishwasher, oven, gas cooktop and microwave
- Double sized bedrooms with built in wardrobes
- Study nook
- Floor to ceiling glass windows throughout
- Expansive internal loggia
- Undercover secure car space

The building features 24 hour concierge and security and tenants enjoy unlimited access to Club Lumiere, the most outstanding residential facilities in the CBD!

Club Lumiere includes a spectacular indoor/outdoor 50 metre heated Olympic size pool, sauna and steam room and spa. The second level boasts a huge first class gym with separate cardio and weights room, two private cinemas and a function room.

For further information or to inspect, please call Eugene Ganke on 0404 010 555 or 8262 8262

The above information provided has been furnished to us by the vendor/s. We have not verified whether or not that information is accurate and do not have any belief in one way or the other in its accuracy. We do not accept any responsibility to any person for its accuracy and do no more than pass it on. All interested parties should make and rely upon their own inquiries in order to determine whether or not this information is in fact accurate.

 2  2  1

Price	\$1250 p/w
Property Type	Rental
Property ID	716

Agent Details

William Chen - 0430 026 436
william@greenciff.com.au

Office Details

Greenciff Sydney Kent St
Level 10/488 Kent Street Sydney NSW
2000 Australia
02 8823 8818

greenciff
Inner city specialists