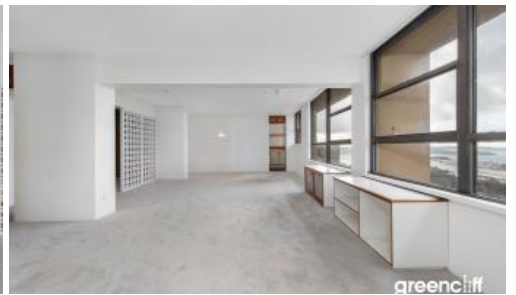


Leased



27 Park St, Sydney



Huge sub-penthouse with fantastic views

Discover unparalleled city living in the heart of Sydney CBD at the Landmark Park Regis.

Situated on the 43rd floor, this premier residential tower offers breathtaking panoramic views of the city skyline, Sydney Harbour, and Hyde Park from its sun-drenched rooftop pool.

Key Features:

Spectacular Views: Enjoy incredible vistas of the city skyline, Sydney Harbour, and Hyde Park.

Abundant Natural Light: North-facing aspect ensures bright and airy interiors.

New : Freshly repainted and new carpet through out apartment

Open Layout: Extra spacious and convenient combined living and dining area for easy entertaining.

Private Bedroom: Features large built-in wardrobes and an en-suite bathroom.

Secure Building: Includes lifts, one car space, and a proactive Building Manager on-site.

Rooftop Oasis: Relax by the sun-drenched pool and sundeck with 360-degree panoramic views.

Ideally located within walking distance to Pitt Street Mall, the Queen Victoria Building (QVB), public transport, supermarkets, boutiques, and an array of popular dining options.

Enjoy the vibrant energy of the city with all conveniences at your doorstep.

Live the high life in a building that's as well-maintained as it is centrally located.

🛏 2 📶 2 🚗 1

Price

Level 43 | \$1130 PW |
Deposit Taken

Property Type

Rental

Property ID

7145

Agent Details

Tammy (Rungnapa) Kanittanon - 0431
511 907 tammy@greenciff.com.au

Office Details

Greenciff Sydney Kent St
Level 10/488 Kent Street Sydney NSW
2000 Australia
02 8823 8818

greenciff
Inner city specialists