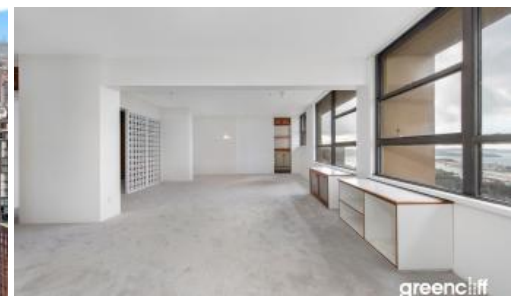




433, 27 Park St, Sydney



Iconic High-Rise Living with Unparalleled Views in the Heart of the CBD

Elevate your lifestyle to new heights with this extraordinary sub-penthouse apartment on the 43th floor of the iconic 'Park Regis' building. Architecturally significant and boasting a coveted floor plan, this sunlit sanctuary offers breathtaking views that are nothing short of spectacular. Be captivated by panoramic views that stretch from Darling Harbour to the heads. From the lounge, soak in the stunning vistas of Hyde Park and Sydney Harbour. The sight of St Mary's Cathedral, the sparkling harbour, and the iconic heads will leave you in awe every day.

Situated in the heart of the CBD, this residence places you just steps away from numerous tourist attractions, including Hyde Park, the historic Town Hall, and the bustling Queen Victoria Building (QVB).

This is more than an apartment - it's a lifestyle of unparalleled luxury and convenience.

Property Highlight:

- Bright dual aspects with a vibrant cityscape
- Light-filled living room capturing awe-inspiring vistas with spectacular views towards Hyde Park, St Mary's Cathedral, Sydney Harbour and the heads
- Well-appointed separate kitchen with ample cabinetry
- Combined living/dining area with an easy-to-maintain layout
- Master bedroom with ensuite

🛏 2 🌐 2 🚗 1

Price SOLD for \$1,500,000
Property Type Residential
Property ID 7100

Agent Details

Emlyn Walters - 0405 606 025
 emlyn@greenciff.com.au
 William Chen - 0430 026 436
 william@greenciff.com.au

Office Details

Greenciff Sydney Kent St
 Level 10/488 Kent Street Sydney NSW
 2000 Australia
 02 8823 8818

