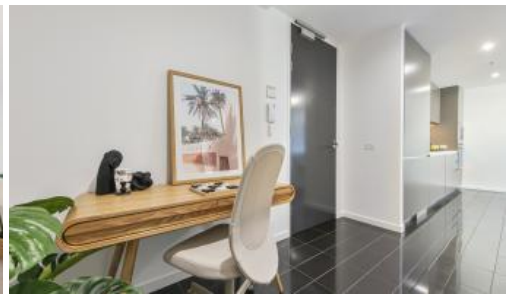


Sold



402, 3 Sterling Cct, Camperdown



Exquisite Urban Oasis: Lavish One-Bedroom Apartment with Study in Prestigious Trio Central

Indulge in the epitome of sophisticated urban living with this impeccably situated, spacious one-bedroom plus study apartment, offering expansive views of the lush surrounding district. Nestled within the prestigious Trio Central building, this modern home presents a seamless fusion of indoor elegance and outdoor tranquility. Positioned within the coveted 'City Quarter' locale, just a leisurely stroll from the charming Annandale Village and mere moments from the vibrant heartbeat of the CBD, this residence encapsulates the essence of contemporary urban lifestyle.

Property Highlights:

- Open-plan living and dining seamlessly flow outdoors
- Floor-to-ceiling glass windows/panels allow plenty of sunshine and ventilation
- Concertina doors reveal an entertaining loggia with leafy district views
- Dedicated study area
- Gourmet kitchen with stone benchtop, gas cooking, and high-end integrated appliances
- Spacious bedroom with built-in robe, opening to the loggia
- Dual-entry bathroom equipped with bathtub and shower, with plenty of storage
- European laundry, ducted A/C, secure building with intercom entry
- Exclusive residents-only access to resort-style facilities, including a gym, indoor and outdoor pools

🛏 1 📶 1 🚗 1 📏 89 m²

Price SOLD for \$880,000
Property Type Residential
Property ID 7043
Land Area 89 m²

Agent Details

Emlyn Walters - 0405 606 025
emlyn@greenciff.com.au

Office Details

Greenciff Camperdown Office
Shop 1 1 Sterling Cct Camperdown NSW
2050 Australia
02 8262 8262

greenciff
Inner city specialists