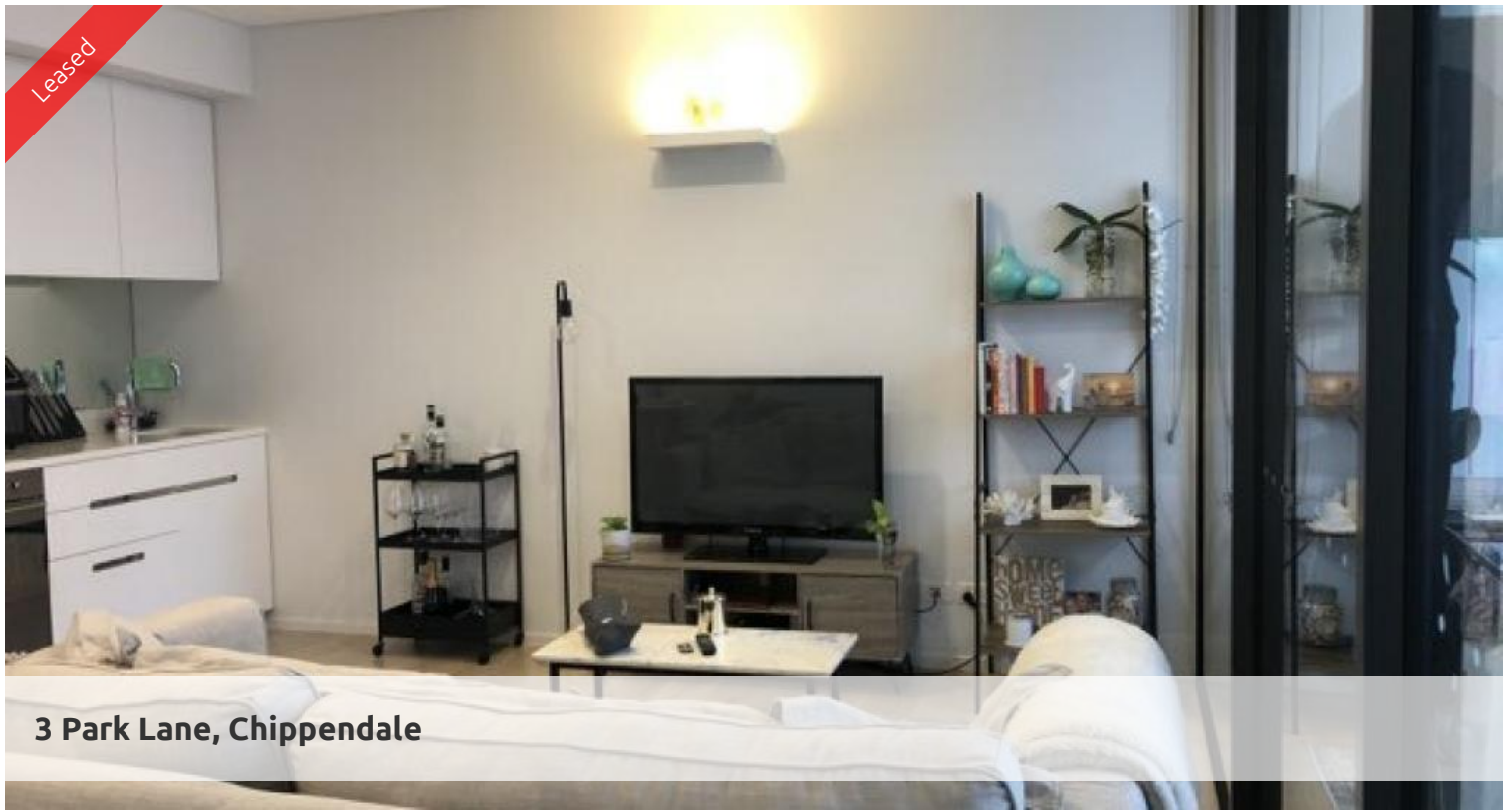


Leased



3 Park Lane, Chippendale



MODERN UNFURNISHED & ONE BEDROOM WITH BILLS INCLUDED IN CENTRAL PARK - DEPOSIT TAKEN

Please meet at our office at 5 Carlton St, Chippendale a few minutes before to register and inspect.

🛏 1 📶 1 🚗 1

Price Level 4 | DEPOSIT TAKEN
Property Type Rental
Property ID 6987

Greencliff - Official On-Site Rental Management Team for Central Park!

Agent Details

Michael Liao - 0410 425 078
michael@greencliff.com.au

One Central Park is inner city living at its best!

Office Details

Greencliff Central Park Office
101/5 Carlton Street Chippendale NSW
2008 Australia
02 9199 6555

Enjoy the convenience of shopping, entertainment, dining and transport right at your doorstep. Built around a beautiful park, One Central Park is the perfect combination of luxury meeting nature.

Rich in amenities, this Central Park development features:

- Luxury apartments with stainless steel appliances
- Security building with 24 hour concierge
- Fitness centre with pool, gymnasium & spa
- 6 star green rated development
- 5 level shopping centre with Woolworths
- District views from the apartments
- A Storage is included.

greenc  **ff**
Inner city specialists