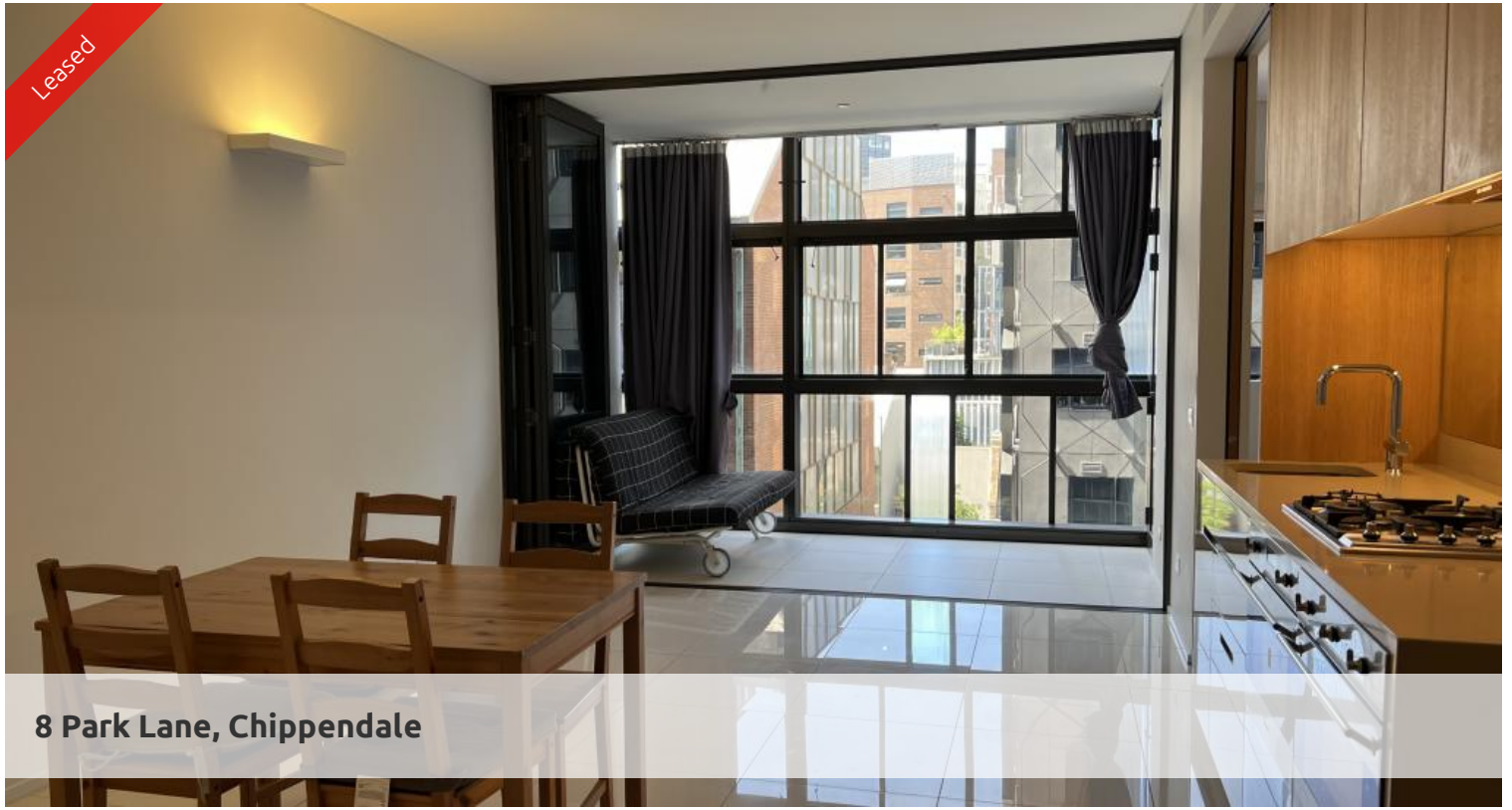


Leased



## 8 Park Lane, Chippendale



### MODERN & FURNISHED ONE BEDROOM IN CENTRAL PARK

**Please meet at our office at 5 Carlton St, Chippendale a few minutes before to register and inspect.**

Greencliff - Official On-Site Rental Management Team for Central Park!

One Central Park is inner city living at its best!

Enjoy the convenience of shopping, entertainment, dining and transport right at your doorstep. Built around a beautiful park, One Central Park is the perfect combination of luxury meeting nature.

Rich in amenities, this Central Park development features:

- Luxury apartments with stainless steel appliances
- Security building with 24 hour concierge
- Fitness centre with pool, gymnasium & spa
- Bonus of a rooftop BBQ area & spa
- 6 star green rated development
- 5 level shopping centre with Woolworths
- City, district or park views from all apartments

🛏 1 🚿 1

**Price** Level 4 | DEPOSIT TAKEN -  
INSPECTION CANCELED

**Property Type** Rental

**Property ID** 6947

#### Agent Details

Daniel Ho - 0424 089 868  
daniel@greencliff.com.au

#### Office Details

Greencliff Central Park Office  
101/5 Carlton Street Chippendale NSW  
2008 Australia  
02 9199 6555

**greenc**iff  
Inner city specialists