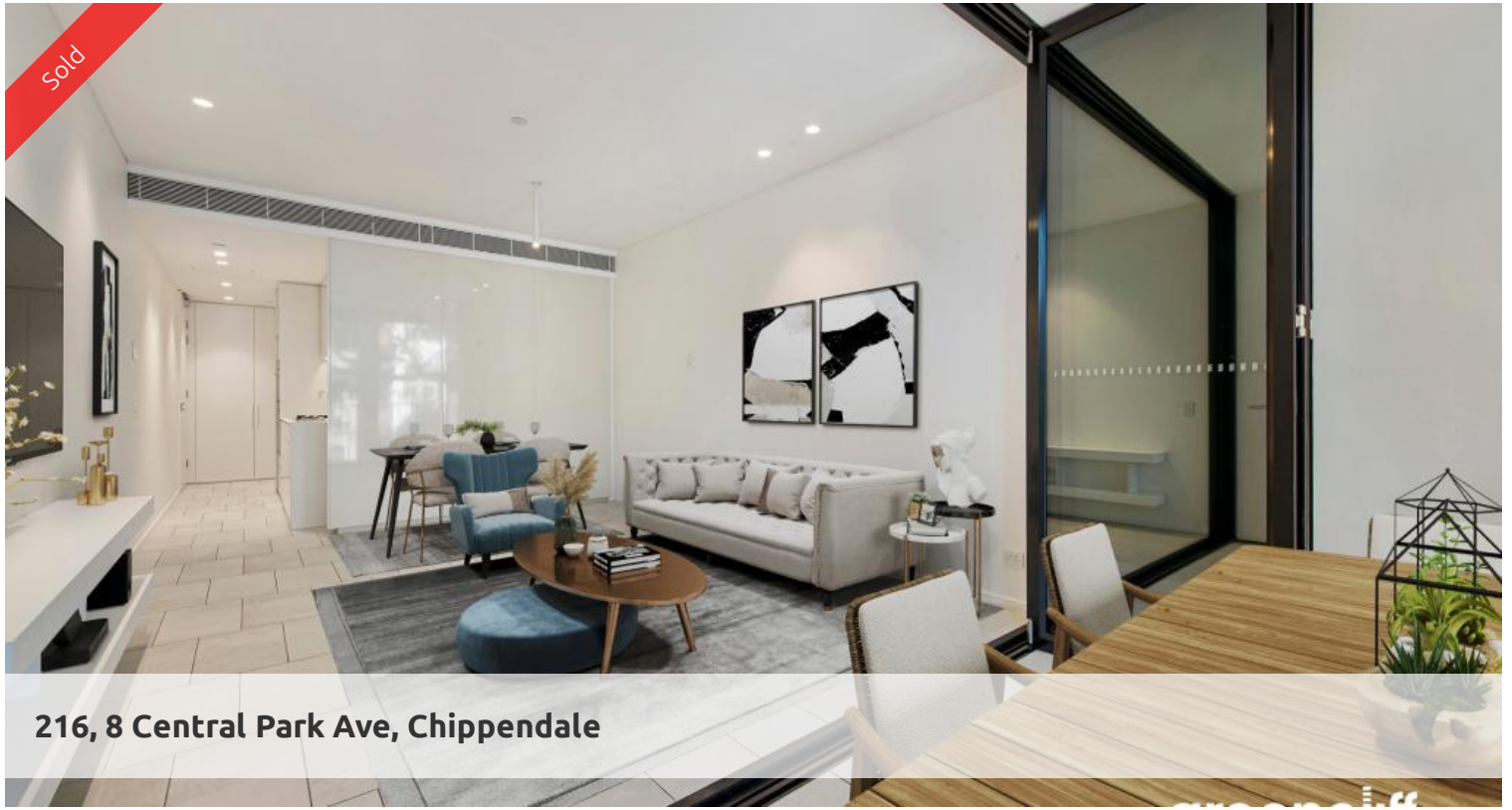


Sold



216, 8 Central Park Ave, Chippendale



Spectacular opportunity for Dual Income - Rental Yield 7.5%

Step into this dynamic space, where versatility and connection reign supreme. With its dual key layout, this haven boasts a spacious one-bedroom apartment alongside a separate self-contained studio, offering a canvas for boundless creativity and endless possibilities. Nestled at the gateway to the bustling CBD, Connor is a sanctuary amidst the urban hustle. Set against the backdrop of the expansive Chippendale Green and just moments from Central Park Mall, Spice Alley, UTS, and the University of Notre Dame, it promises not just convenience, but a kaleidoscope of experiences waiting to be embraced.

Property Highlights:

- Flexible use for living + investment options
- Expansive Westerly view flooded with natural sunlight
- Floor to ceiling glass doors that open up to loggia
- Open plan living and dining maximizes usable space
- 2 x Slimline kitchen with stone benchtop and integrated SMG appliances
- Neat and cleverly crafted floorplan with plenty of cabinetry for storage
- Elegant finishes, tiled in the living and carpeted bedrooms
- Ducted air-condition, shared full laundry facility
- Secure building with 7/7 concierge, intercom entry and lift access
- Exclusive residents only amenities include a gym, meeting room and communal rooftop garden

🛏 2 🏠 2 📏 95 m²

Price	SOLD
Property Type	Residential
Property ID	6946
Land Area	95 m ²

Agent Details

Danny Yeung - 0451 836 388
danny@greenciff.com.au
William Chen - 0430 026 436
william@greenciff.com.au

Office Details

Greenciff Central Park Office
101/5 Carlton Street Chippendale NSW
2008 Australia
02 9199 6555

greenciff
Inner city specialists