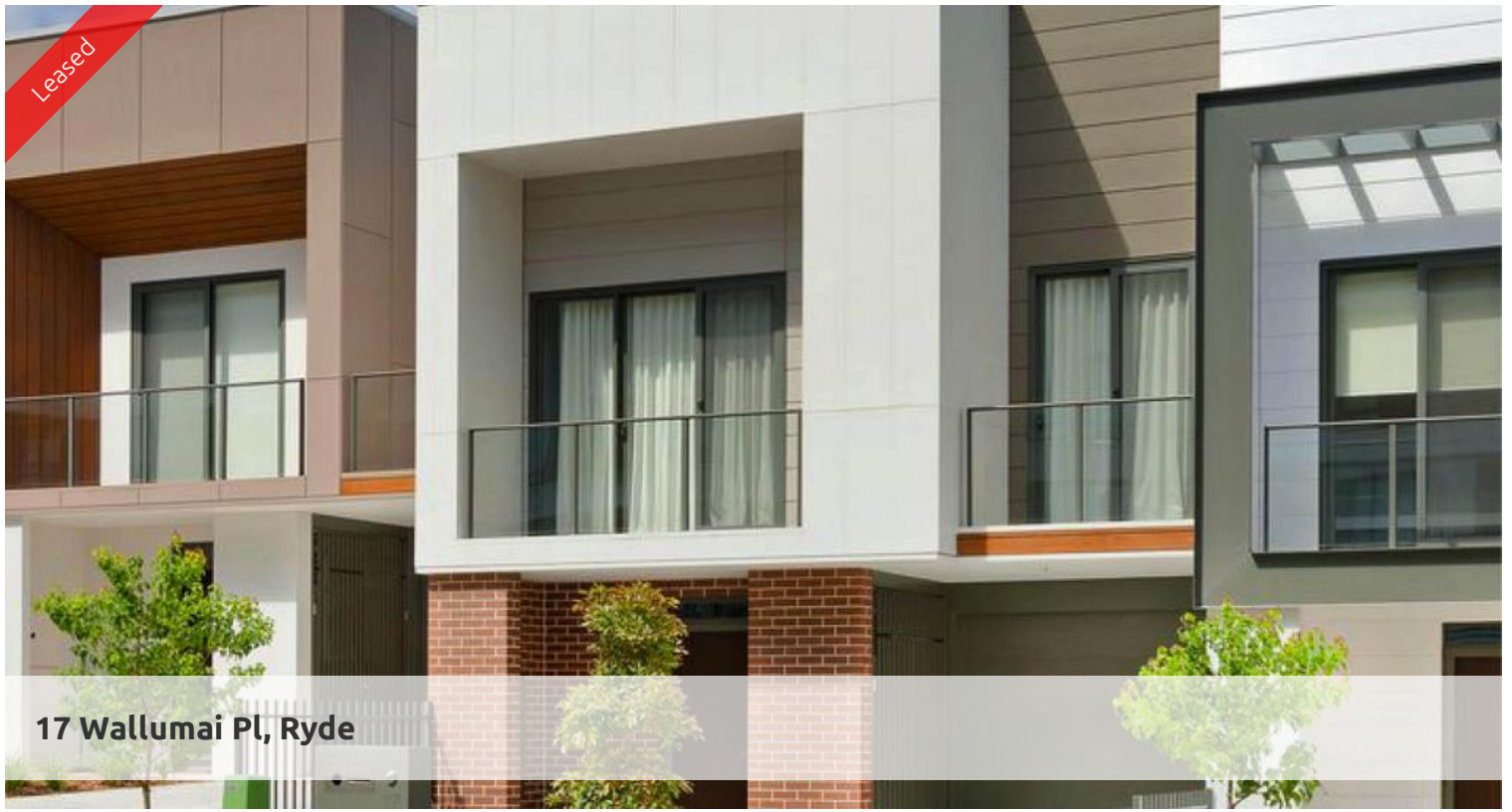


Leased



17 Wallumai Pl, Ryde



## LARGE 4 BEDROOM TERRACE IN PUTNEY HILL

Stylish four bedroom terrace which combines contemporary style with a true sense of community at Putney Hill. Designed by Cox Richardson Architects, this two Storey house is truly magnificent, treated with meticulous attention to detail and beautifully integrated with the natural landscape.

- Combined lounge and dining areas, versatile yet practical layout, tiled flooring
- Gourmet chef's kitchen, with gas cook top and dishwasher
- Ducted reverse cycle air conditioning system, laundry/storage rooms
- Four generous bedrooms, each with built-in wardrobes
- Living spaces optimising natural light
- Huge sundrenched landscaped garden
- Spacious lock-up garage plus off street parking

This fabulous development is conveniently positioned moments from nearby shops, cafes, schools, parks and transport.

The above information provided has been furnished to us by the vendor/s. We have not verified whether or not that information is accurate and do not have any belief in one way or the other in its accuracy. We do not accept any responsibility to any person for its accuracy and do no more than pass it on. All interested parties should make and rely upon their own inquiries in order to determine whether or not this information is in fact accurate.

🛏 4 🚿 2 🚗 2

**Price** SPACIOUS FAMILY HOME |  
\$1300 PW | DEPOSIT TAKEN

**Property Type** Rental  
**Property ID** 6930

### Agent Details

Tammy (Rungnapa) Kanittanon - 0431  
511 907 tammy@greencliff.com.au

### Office Details

Greencliff Camperdown Office  
Shop 1 1 Sterling Cct Camperdown NSW  
2050 Australia  
02 8262 8262

**greenc**iff  
Inner city specialists