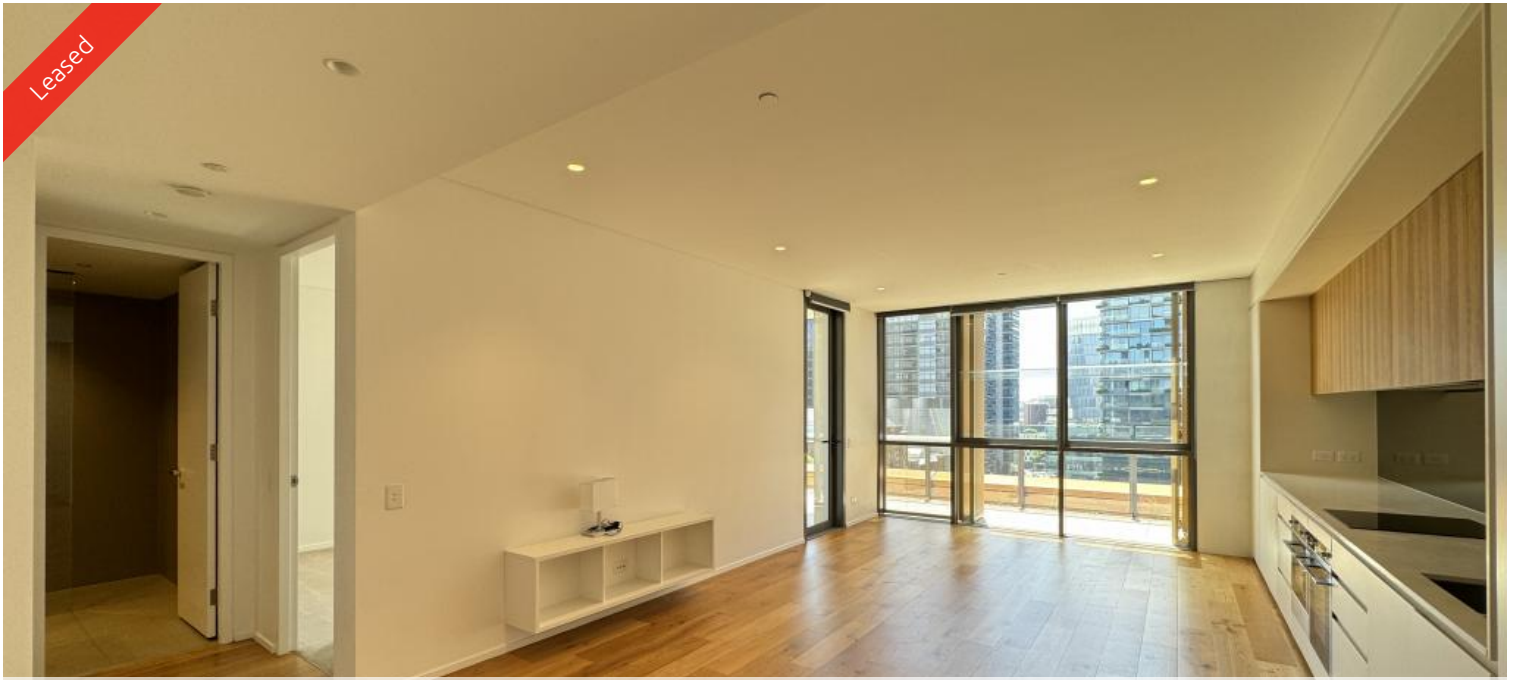
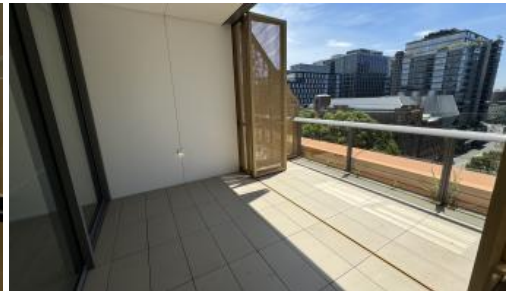


Leased



81 O'connor St, Chippendale



LUXURY & SPACIOUS TWO BEDROOMS IN CENTRAL PARK WITH PARK VIEW

Please meet at our office on 5 Carlton Street, Chippendale a few minutes before to register and inspect.

The final building of Central Park is now complete offering all residents a unique lifestyle surrounded by parks and gardens with a large shopping complex, movie theatre and sitting right next to Spice Alley and Kensington Street. You have everything at your door and only moments from Sydney CBD. Wonderland is a beautiful building full of character and style the apartments are sleek, modern are generous in size.

- * Large open plan living, dining and kitchen.
- * Large balcony with park view.
- * Sleek kitchen with induction cooking and integrated dishwasher.
- * Large terrace perfect for entertaining and relaxing.
- * Stylish bathroom with rain shower. Bath in ensuite.
- * Internal laundry.
- * North facing aspect
- * Ample amount of storage and cupboard space

For further information or to inspect, please call Daniel Ho on 0424 089 868.

** images used maybe indicatives only**

🛏 2 📶 2 🚗 1

Price Level 8 | DEPOSIT TAKEN -
INSPECTION CANCELED

Property Type Rental

Property ID 6789

Agent Details

Daniel Ho - 0424 089 868
daniel@greenciff.com.au

Office Details

Greenciff Central Park Office
101/5 Carlton Street Chippendale NSW
2008 Australia
02 9199 6555

greenciff
Inner city specialists