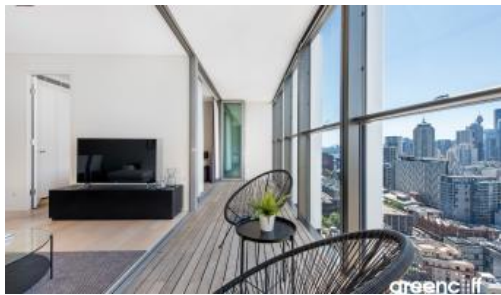




2404, 18 Park Lane, Chippendale



Sub-penthouse two bedrooms plus study with fabulous views!

Excellent views to city and Darling Harbour water view

Situated on the 24th floor of the 27-level Mark building, one of Central Park's modern and sleekly designed buildings.

Beautifully finished with unobstructed views to the North and City to east this property offers all the luxury, convenience and security you would expect to find in a world class building such as this.

With two bedrooms, two bathrooms and two car spaces including storage, this property is a must to inspect.

Features include:

- Study room
- Winter garden with view
- Air conditioning
- Built in wardrobes
- 24 hour concierge
- Same level access as BBQ and Spa
- Gym
- Spa

🛏 2 🗺 2 🚗 2

Price \$1,800,000
Property Type Residential
Property ID 6730

Agent Details

William Chen - 0430 026 436
 william@greenciff.com.au
 Danny Yeung - 0451 836 388
 danny@greenciff.com.au

Office Details

Greenciff Central Park Office
 101/5 Carlton Street Chippendale NSW
 2008 Australia
 02 9199 6555

