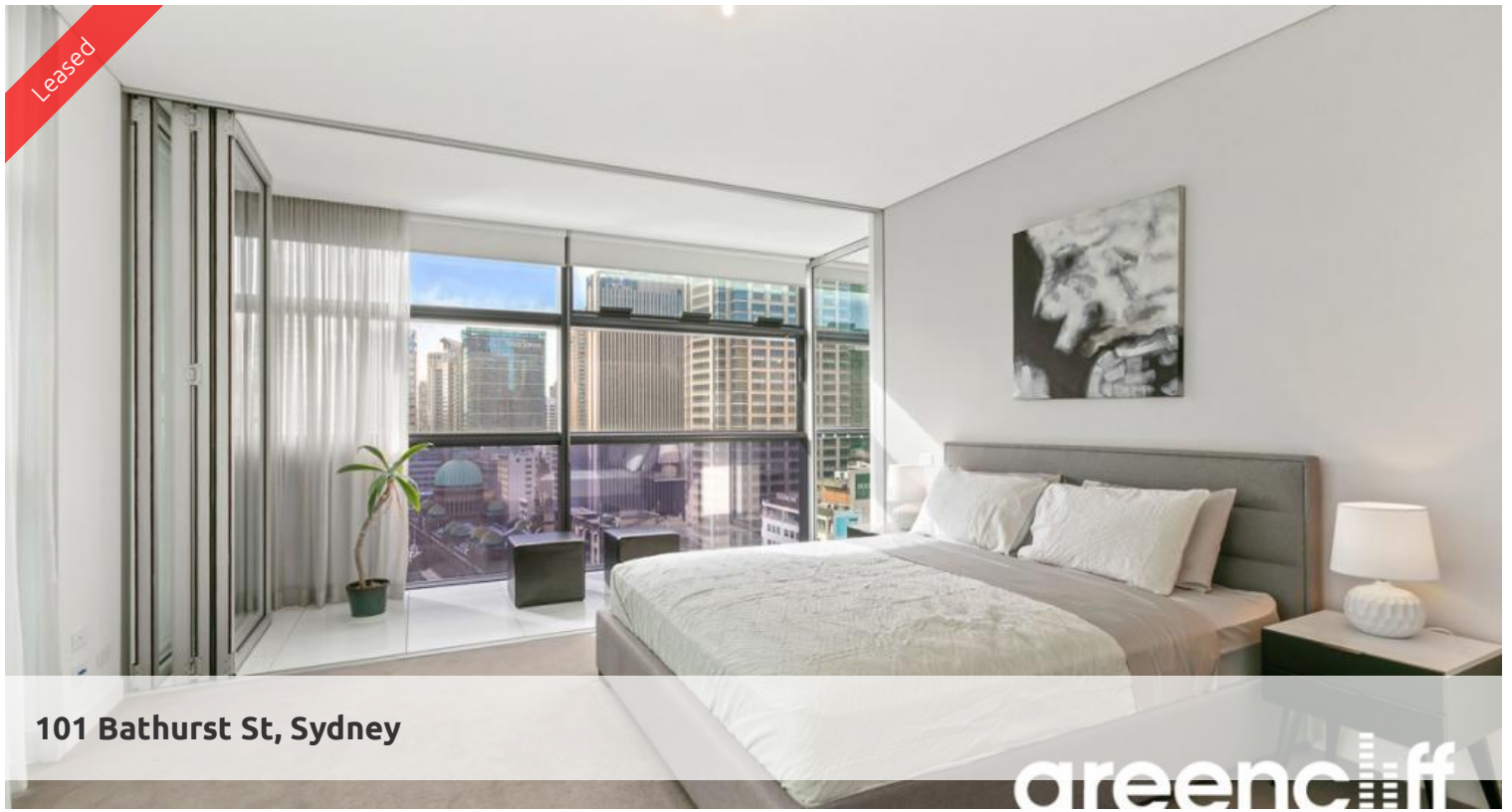
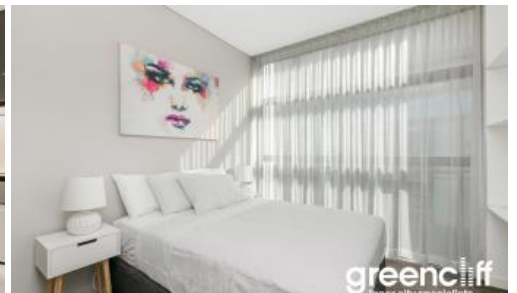


Leased



101 Bathurst St, Sydney

greenciff



NORTH FACING FURNISHED 2BED APARTMENT WITH LARGE STUDY NOOK - LUMIERE RESIDENCES

Extraordinary Lumiere Residences, Sydney's mid-town becomes a vibrant living quarter through creation of Regent Place, Australia's first vertical village. The 56- level residential tower with 456 light-filled homes is an extraordinary re-invention of high-rise living.

Features of this wonderful apartment include:

- Spacious combined lounge and dining area, enjoy views Townhall and beyond
- Open plan kitchen with European gas cooking, Stone benchtop and drawer dishwasher
- 2 double sized bedrooms, both with built-in wardrobes with main featuring ensuite with bath tub.
- Separate study area/extra internal storage space
- Ducted air conditioning throughout
- Secure parking space
- Loggia overlooking Town Hall and the QVB
- Internal laundry with dryer

The Lumiere Residences features 2 levels of private residential facilities including a 50 metre swimming pool spanning indoor to outdoor, a comprehensive first class gym, yoga/games room, 2 cinemas, meeting area and 24 hour concierge/security. Living in Lumiere is all about giving residents the distinct advantage of convenience, such as finding something to do as close as "downstairs" in Regent's Place own restaurants, or the city's cinema precinct.

🛏 2 🌐 2 🚗 1

Price Level 29 | \$1600 PW |
Deposit Taken

Property Type Rental

Property ID 6690

Agent Details

Tammy (Rungnapa) Kanittanon - 0431 511 907 tammy@greenciff.com.au

Office Details

Greenciff Sydney Kent St
Level 10/488 Kent Street Sydney NSW
2000 Australia
02 8823 8818

greenciff
Inner city specialists