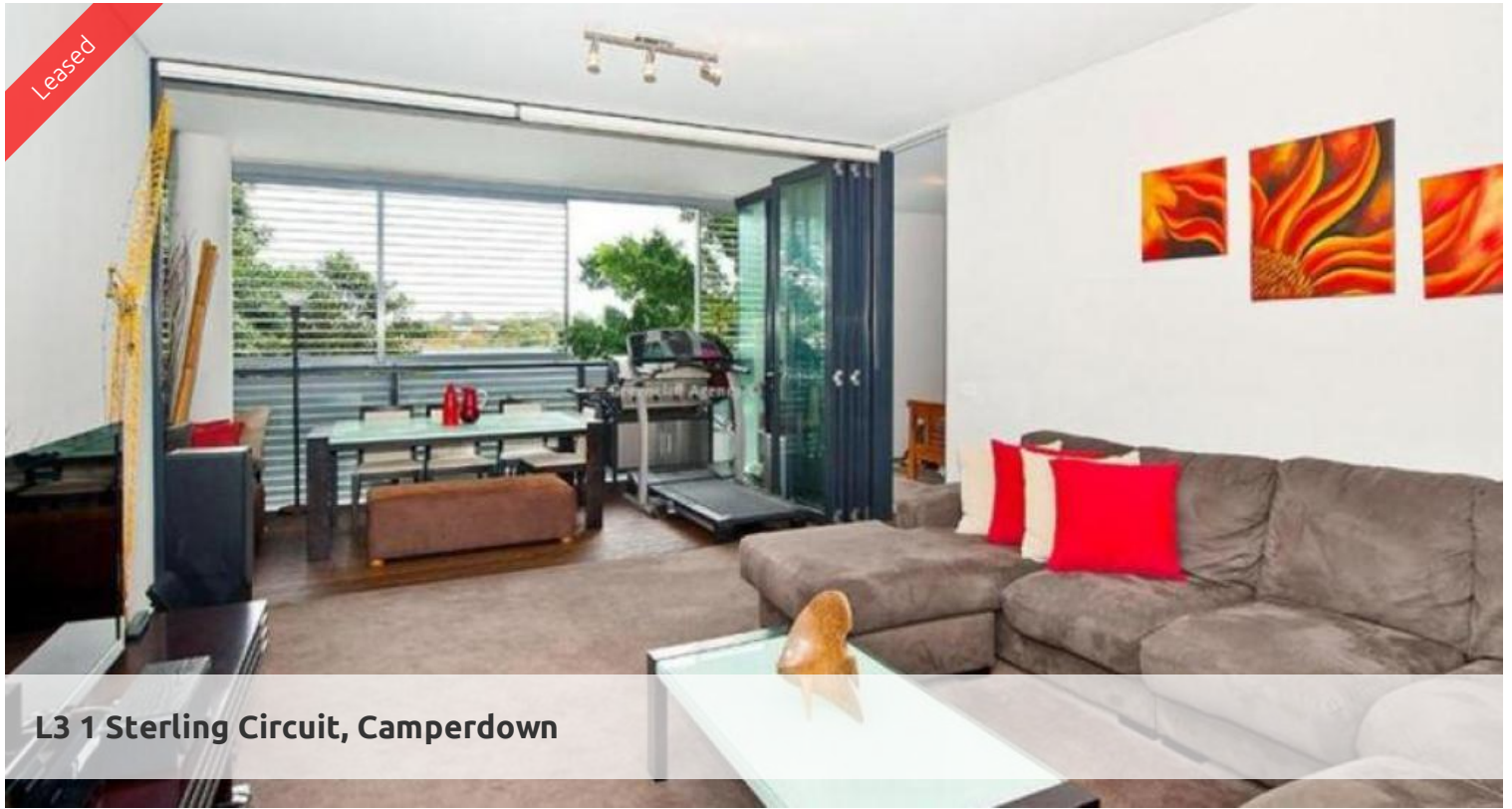


Leased



### L3 1 Sterling Circuit, Camperdown



\*\*\* DEPOSIT TAKEN \*\*\* OPEN HOME CANCELLED

\*\*\* DEPOSIT TAKEN \*\*\* OPEN HOME CANCELLED

ONE BEDROOM APARTMENT IN TRIO!

This superb one bedroom plus study is located in the South building in the Trio complex in the popular City Quarter precinct. Features include

- Spacious living area flowing to generous timber decked loggia
- Open plan kitchen with gas cook top, fridge and dishwasher
- Spacious bedroom with built-in wardrobe, internal laundry
- Dual access bathroom with separate bath and shower, sleek finishes
- Separate study space, undercover security car space and storage cage

Being in The City Quarter Complex you will be able to enjoy the free, unlimited access to your choice of a 50 metre outdoor or 25m indoor pool and two gymnasiums. The complex also has 24 hour security, a Japanese restaurant, cafe & convenience store.

Only a 10 minute bus ride to the city or an easy stroll to Annandale shopping village, Glebe, Broadway, Leichhardt and Newtown which are just around the corner.

Call Miki Zhang on 8262 8262 to inspect.

The above information provided has been furnished to us by the vendor/s. We have not verified whether or not that information is accurate and do not have any belief in one way or the other in its accuracy. We do not accept any responsibility to any person for its accuracy and do no more than pass it on. All interested parties should make and rely upon their own inquiries in order to determine whether or not this information is in fact accurate.

🛏 1 🚿 1 🚗 1

**Price** \$630 p/w  
**Property Type** Rental  
**Property ID** 669

#### Agent Details

William Chen - 0430 026 436  
william@greenciff.com.au

#### Office Details

Greenciff Sydney Kent St  
Level 10/488 Kent Street Sydney NSW  
2000 Australia  
02 8823 8818

**greenciff**  
Inner city specialists