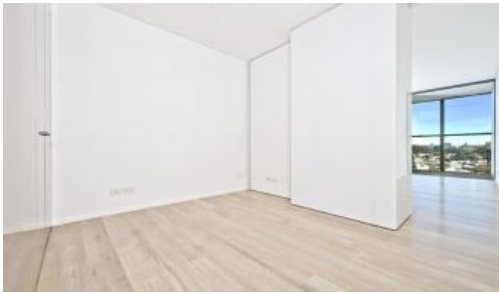


Leased



## 18 Park Lane, Chippendale



### MODERN SUITE ONE BEDROOM IN CENTRAL PARK

**Please meet at our office at 5 Carlton Street, Chippendale a few minutes before to register and inspect.**

“The Mark is the future of vibrant inner city living and a shining example of all that advanced technologies and bold imaginations can contribute to modern and sustainable living”

Located at Central Park Chippendale, The Mark has direct access to a fully equipped gymnasium, an elevated outdoor pool and on your doorstep is an expansive tree lined park named Chippendale Green. Fashionable retail outlets, a Woolworths supermarket and various cafes and eateries such as Din Tai Fung available to your heart's content.

Moments to Central station, buses and surrounding Universities makes living at Central Park the ultimate in downtown living.

The Mark is the ultimate lifestyle precinct.

The apartments boast intelligent and lifestyle-savvy interiors, features

- Ducted air conditioning
- Loggia for indoor/outdoor living
- Fridge and washer/dryer included

🛏 1 📶 1

**Price** Level 14 | DEPOSIT TAKEN -  
INSPECTION CANCELED

**Property Type** Rental

**Property ID** 6625

#### Agent Details

Daniel Ho - 0424 089 868  
daniel@greenciff.com.au

#### Office Details

Greenciff Central Park Office  
101/5 Carlton Street Chippendale NSW  
2008 Australia  
02 9199 6555

**greenciff**  
Inner city specialists