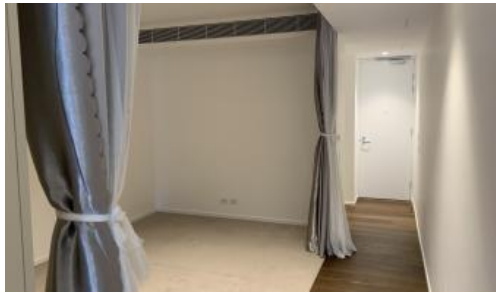


Leased



**8 Central Park Ave, Chippendale**



## MODERN ONE BEDROOM SUITE IN CENTRAL PARK

**Please meet at our office 101/5 Carlton Street, Chippendale a few minutes before to register and inspect.**

"Connor is a balance of location and surroundings, opportunity and innovation. Both modern and warm, contemporary and inviting, It is supremely comfortable nestled on the edge of old and new."

Designed by Smart Design Studio, Connor offers a selection of 178 impeccably designed apartments.

Nestled in the heart of Chippendale, Connor is amongst fashionable retail outlets, a Woolworths supermarket and various cafes and eateries including the impressive new eating precinct Spice Alley on Kensington Lane.

Moments to Central station, buses and surrounding Universities makes living at Central Park the ultimate in downtown living.

The apartments boast intelligent and lifestyle-savvy interiors, features

- Ducted air conditioning
- Large open plan living room

 1  1

**Price** Level 4 | DEPOSIT TAKEN -  
INSPECTION CANCELED

**Property Type** Rental

**Property ID** 6591

### Agent Details

Daniel Ho - 0424 089 868  
daniel@greenciff.com.au

### Office Details

Greenciff Central Park Office  
101/5 Carlton Street Chippendale NSW  
2008 Australia  
02 9199 6555

**greenciff**  
Inner city specialists