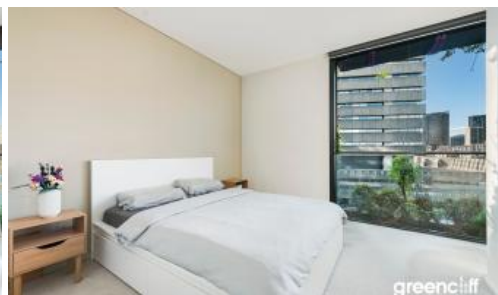


Sold



E604, 3 Carlton St, Chippendale



North Facing One Bed in the Famous One Central Park

Situated on Level 6 of 'One Central Park East', this stunning one bedroom apartment offers inner-city living surrounded by a living vertical garden. One Central Park presents the perfect combination of luxury meeting nature.

Rich in amenities, this Central Park apartment features:

- Award winning modern design
- Elegant finishes, with dark timber and carpet flooring
- North facing views, captured through floor-to-ceiling windows
- Storage cage
- Security building with 24 hour concierge
- Fitness centre with heated pool, commercial sized gym & spa
- 6 star green rated development
- 5 level shopping centre with Woolworths for your everyday shopping needs

This apartment offers an abundance of amenities right at your doorstep. Step right out onto Broadway, Central Park Mall, Central Station, Spice Alley, UTS, Sydney University, Haymarket and City Centre.

Outgoings Per Quarter (approx)

Strata: \$2048

🛏 1 🚿 1 📏 49 m2

Price	SOLD
Property Type	Residential
Property ID	6576
Land Area	49 m2

Agent Details

William Chen - 0430 026 436
william@greenciff.com.au
Danny Yeung - 0451 836 388
danny@greenciff.com.au

Office Details

Greenciff Central Park Office
101/5 Carlton Street Chippendale NSW
2008 Australia
02 9199 6555

greenciff
Inner city specialists