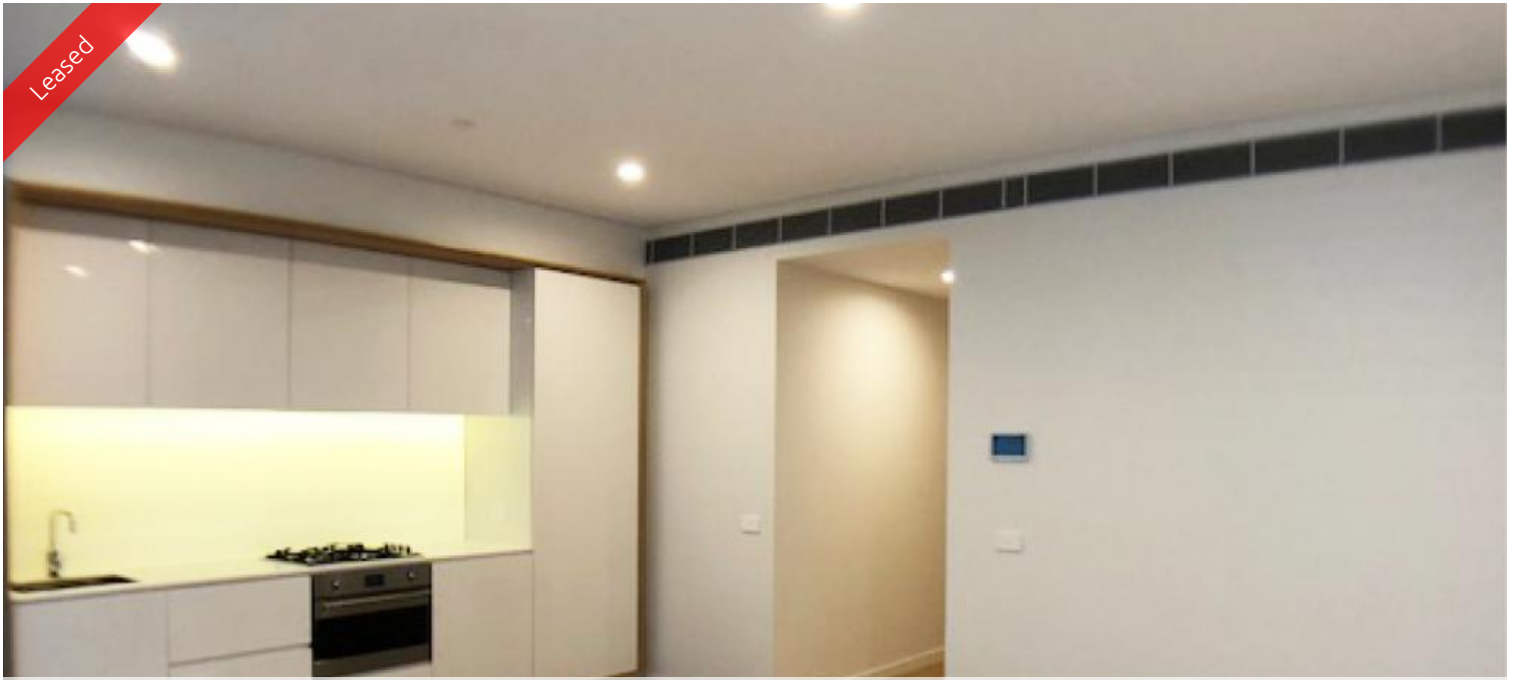
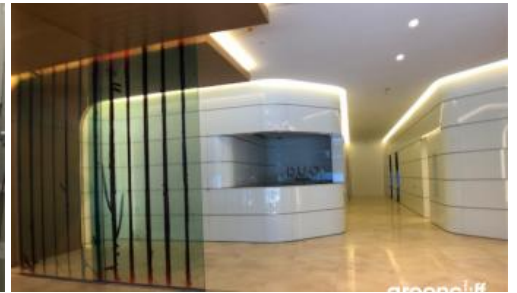


Leased



## 1 Chippendale Way, Chippendale



### MODERN ONE BEDROOM PLUS STUDY IN CENTRAL PARK

Please meet at our office 5 Carlton Street, Chippendale a few minutes before to register and inspect

Designed by Fosters & Partner, Duo offers a selection of 1, 2 and 3 bedroom apartment, each impeccably designed.

Nestled in the heart of Chippendale, Duo is amongst fashionable retail outlets, a Woolworths supermarket and various cafes and eateries including the impressive new eating precinct Spice Alley on Kensington Lane.

Moments to Central station, buses and surrounding Universities makes living at Central Park the ultimate in downtown living.

The apartments boast intelligent and lifestyle-savvy interiors, features

- Ducted air conditioning
- Smart lighting system
- Loggia for indoor/outdoor living
- Fridge and washer/dryer included
- European kitchen appliances/stone bench tops
- The latest bathroom fittings and design
- Tiled flooring to the living areas/carpeted bedroom

 1  1

**Price** Level 5 | DEPOSIT TAKEN -  
INSPECTION CANCELED

**Property Type** Rental

**Property ID** 6569

#### Agent Details

Daniel Ho - 0424 089 868  
daniel@greenciff.com.au

#### Office Details

Greenciff Central Park Office  
101/5 Carlton Street Chippendale NSW  
2008 Australia  
02 9199 6555

**greenciff**  
Inner city specialists