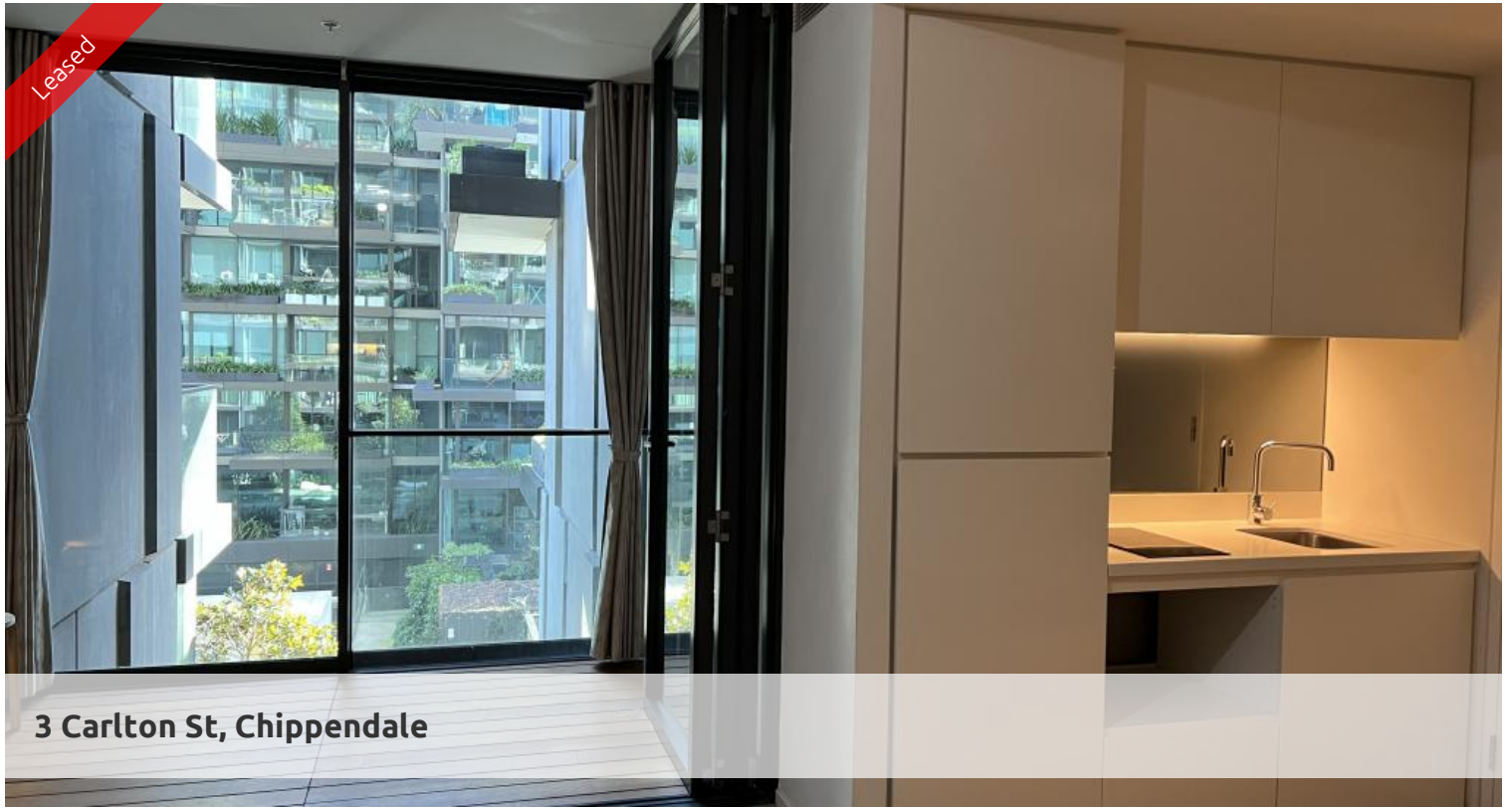


Leased



3 Carlton St, Chippendale



MODERN STUDIO WITH BILLS INCLUDED IN CENTRAL PARK

Please meet at our office at 5 Carlton St, Chippendale a few minutes before to register and inspect.

One Central Park is inner city living at its best!

Enjoy the convenience of shopping, entertainment, dining and transport right at your doorstep. Built around a beautiful park and draped in a living vertical garden, One Central Park is the perfect combination of luxury meeting nature.

Rich in amenities, this Central Park features:

- New luxury apartments with stainless steel appliances
- Timber floor
- Security building with 24 hour concierge
- Fitness centre with pool, gymnasium & spa
- 6 star green rated development
- 5 level shopping centre with Woolworths
- City, district or park views from all apartments
- Fridge and washer/dryer included
- More than 30,000sqm of surrounding park and public space.

🛏 1 📶 1

Price Level 8 | DEPOSIT TAKEN -
INSPECTION CANCELED

Property Type Rental

Property ID 6565

Agent Details

Daniel Ho - 0424 089 868
daniel@greenciff.com.au

Office Details

Greenciff Central Park Office
101/5 Carlton Street Chippendale NSW
2008 Australia
02 9199 6555

greenciff
Inner city specialists