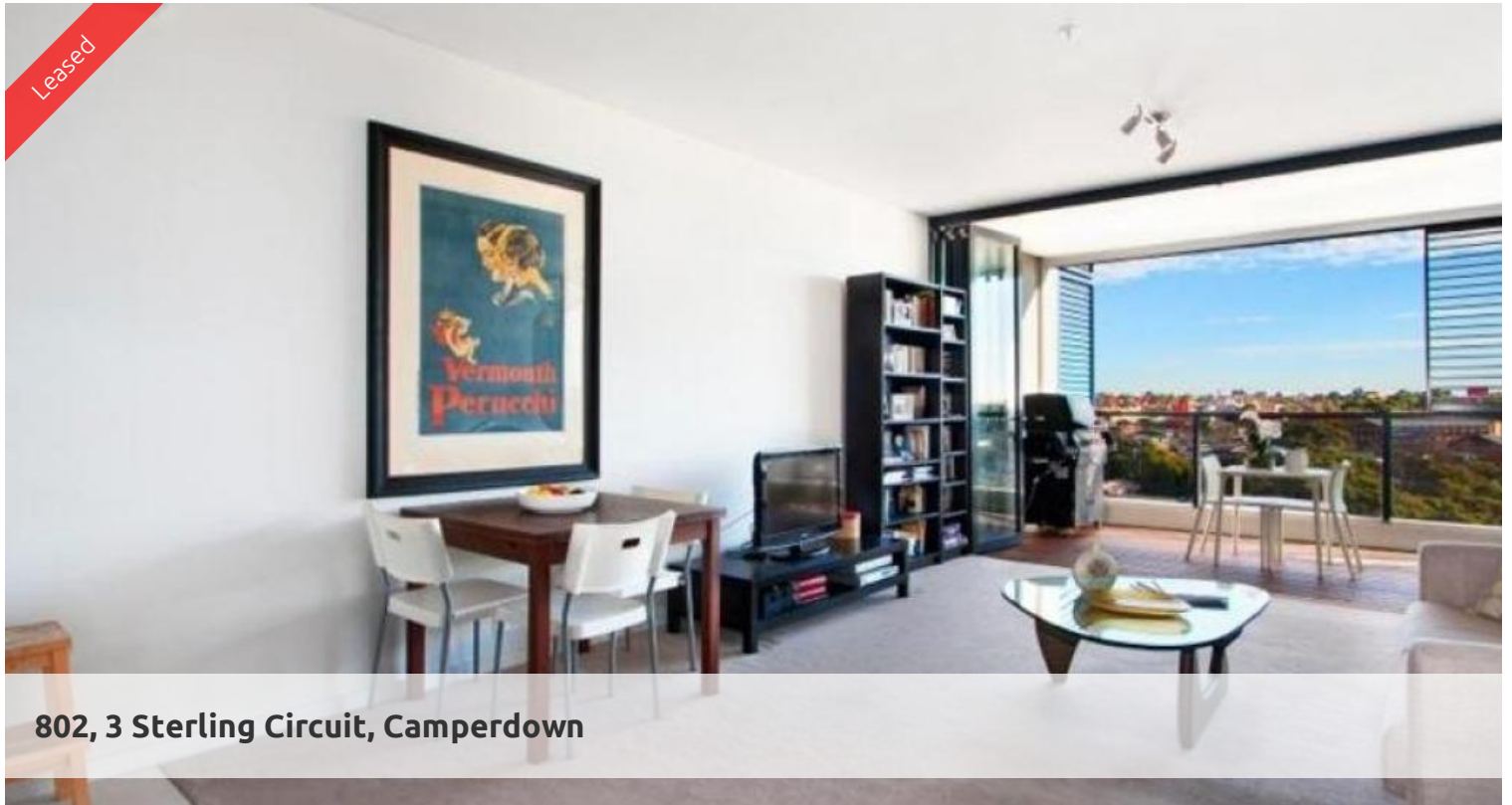


Leased



802, 3 Sterling Circuit, Camperdown



DEPOSIT TAKEN

"TRIO" ONE BEDROOM APARTMENT WITH STUDY

Sunny and spacious west facing one bedroom apartment located on the eighth floor of the Central building of sought after "Trio". Features include:

- Open plan gas kitchen with Smeg stainless steel appliances
- Spacious living area superbly flowing to generous loggia
- Separate study space, concealed internal laundry facilities
- Sleek dual access bathroom with separate bath and shower
- Spacious bedroom with built-in robes and lovely outlook
- Superb finishes throughout, reverse cycle air conditioning
- Natural flow of indoor/outdoor living, ideal for alfresco entertaining

Being in The City Quarter Complex you will be able to enjoy the free, unlimited access to your choice of a 50 metre outdoor or 25m indoor pool and two gymnasiums. The complex also has 24 hour security, a Japanese restaurant, cafe & convenience store.

Only a 10 minute bus ride to the city or an easy stroll to Glebe, Broadway, Leichhardt and Newtown which are just around the corner.

The above information provided has been furnished to us by the vendor/s. We have not verified whether or not that information is accurate and do not have any belief in one way or the other in its accuracy. We do not accept any responsibility to any person for its accuracy and do no more than pass it on. All interested parties should make and rely upon their own inquiries in order to determine whether or not this information is in fact accurate.

🛏 1 📶 1 🚗 1

Price

P.O.A.

Property Type

Rental

Property ID

653

Agent Details

William Chen - 0430 026 436

william@greenciff.com.au

Office Details

Greenciff Sydney Kent St

Level 10/488 Kent Street Sydney NSW

2000 Australia

02 8823 8818

greenciff
Inner city specialists