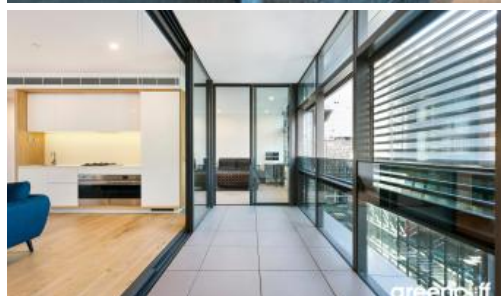


Sold



605, 1 Chippendale Way, Chippendale



Modern design 3 bedroom perfect for living and investment

Presenting a fabulous opportunity, this apartment contains two master suites featuring great flexibility as either an expansive three bedroom or dual key apartment to lease or occupy either side.

Boasting spacious interiors, with premium modern finishes, timber flooring leading into carpeted bedrooms, this apartment presents itself as a welcoming to both owners and/or tenants. Rich with amenities, DUO offers: resort style gym and 25m indoor swimming pool and spa, outdoor BBQ area on level 16, private function room and 24-hour security/Concierge.

This modern and forward-thinking apartment offers:

- Dual key convertible: 2 bedroom + Studio
- Ducted air conditioning
- Smart lighting system
- Loggia for indoor/outdoor living
- Fridge and washer/dryer included
- The latest bathroom fittings and design, with rainwater shower
- Timber flooring to the living areas/carpeted bedroom
- Security intercom system
- Storage cage
- Total strata size: 164sqm

🛏 3 🌐 3 🚗 2

Price	SOLD
Property Type	Residential
Property ID	6515

Agent Details

Danny Yeung - 0451 836 388
danny@greenciff.com.au
William Chen - 0430 026 436
william@greenciff.com.au

Office Details

Greenciff Central Park Office
101/5 Carlton Street Chippendale NSW
2008 Australia
02 9199 6555

greenciff
Inner city specialists