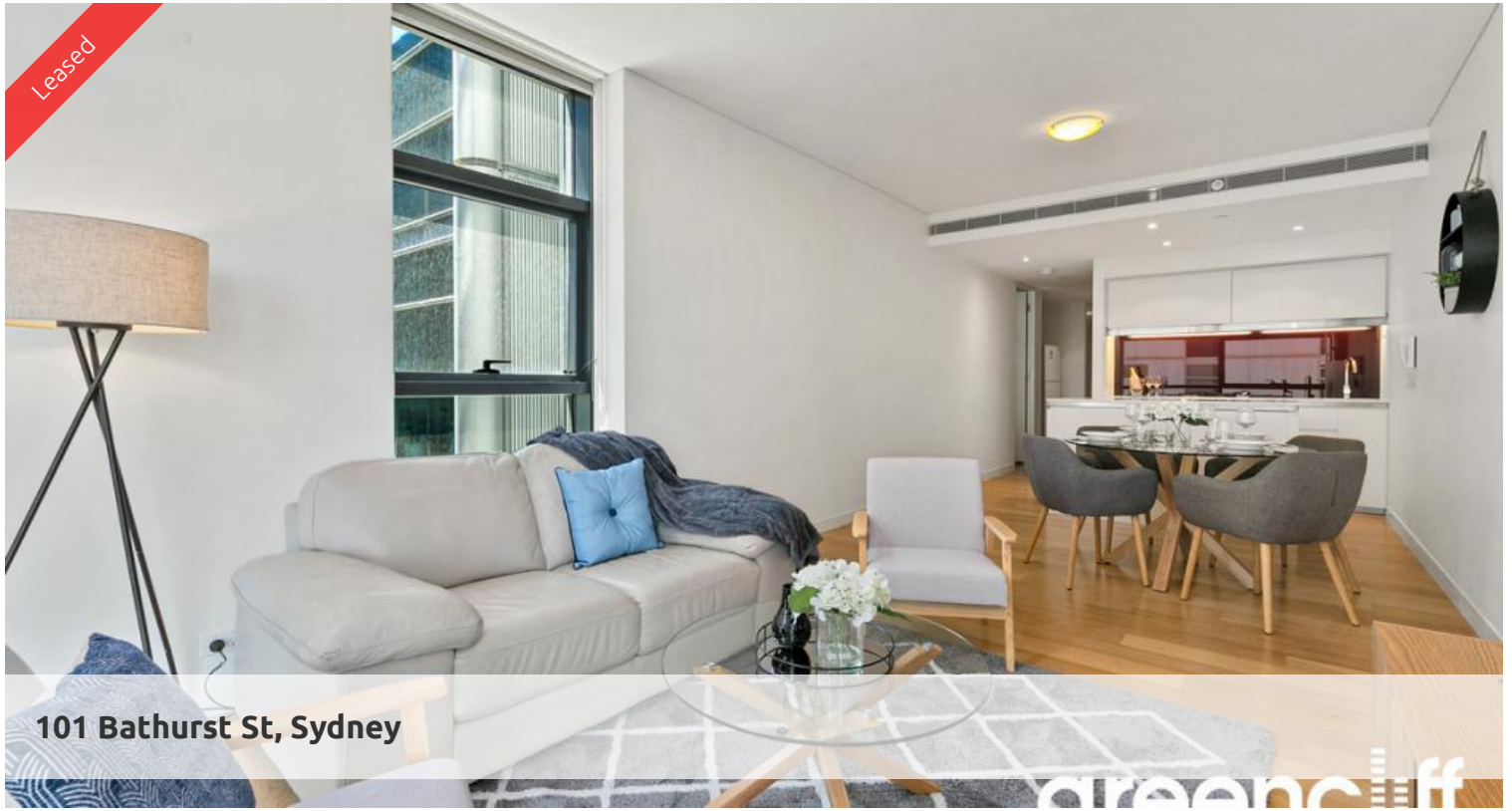


Leased



101 Bathurst St, Sydney

greenciff



greenciff



greenciff



greenciff

Immaculately kept unfurnished 1 bedroom with study

Featuring spacious combined lounge and dining areas, state of the art modern kitchen with dishwasher, grand bathroom, a separate study nook with internal laundry.

Apartment comes with 1 parking space

Located in the heart of Sydney's iconic Town Hall precinct, Lumiere at Regent Place is a residential village in the sky. Consisting of an elegant glass tower floating above a new retail & commercial arcade, Regent Place.

Soaring 56 levels, Lumiere Residences features a collection of light-filled and spacious homes that embrace the historic surrounds. A living innovation in every sense, Lumiere at Regent Place is set to transform this prestigious mid-town precinct of Sydney into a vibrant living quarter.

Lumiere features world class facilities including - 24 hour security and concierge - 2 private cinemas - 50 meter swimming pool - Spa, sauna and steam room - Meeting area

(**Photos maybe indicative)

The above information provided has been furnished to us by the vendor/s. We have not verified whether or not that information is accurate and do not have any belief in one way or the other in its accuracy. We do not accept any responsibility to any person for its accuracy and do no more than pass it on. All interested parties should make and rely upon their own inquiries in order to determine whether or not this information is in fact accurate.

🛏 1 🚿 1 🚗 1

Price

Level 28 | \$880 PW | Deposit Taken

Property Type

Rental

Property ID6467

Agent Details

Tammy (Rungnapa) Kanittanon - 0431 511 907 tammy@greenciff.com.au

Office Details

Greenciff Sydney Kent St
Level 10/488 Kent Street Sydney NSW
2000 Australia
02 8823 8818

greenciff
Inner city specialists