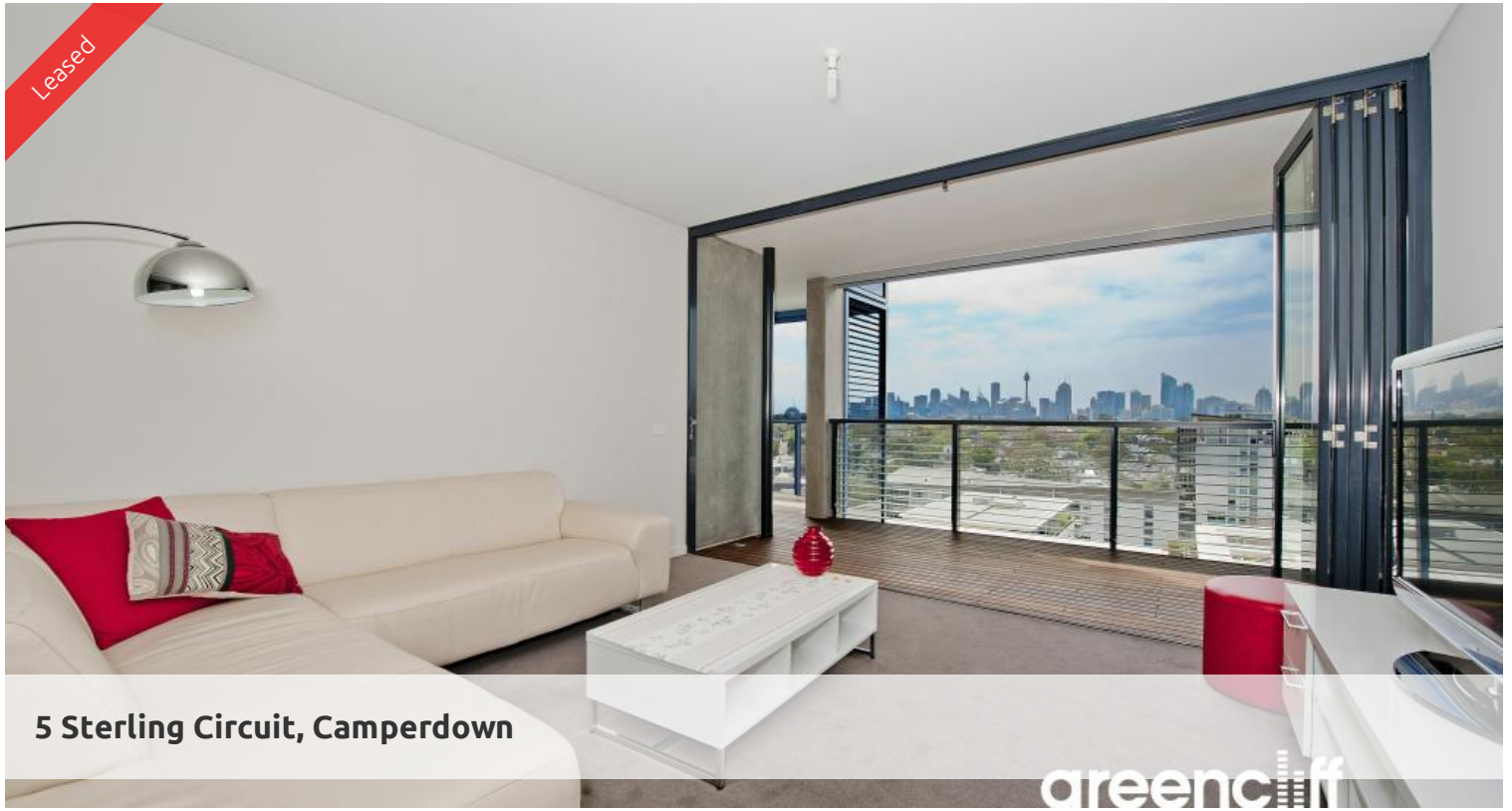


Leased



5 Sterling Circuit, Camperdown

greenciff



TWO BEDROOM PLUS STUDY NOOK AND PARKING

Perfectly positioned on the eleventh floor of the North building of sought after Trio is this fabulous two bedroom apartment. Boasting extensive city views from every room this apartment oozes relaxation and ambience.

Features include:

- Gourmet kitchen with European gas appliances and dishwasher
- Open plan living flowing to timber loggia, ideal for entertaining
- Two sleek bathrooms, ensuite with bath, internal laundry
- Two large bedrooms, master with walk in closet, both with loggia access
- Security building with car space, lift access and storage

Being in The City Quarter Complex you will be able to enjoy the free, unlimited access to your choice of a 50 metre outdoor or 25m indoor pool and two gymnasiums. The complex also has 24 hour security and restaurants.

Only a 10 minute bus ride to the city or an easy stroll to Tramsheds, Jubilee park, Glebe, RPA hospital, Sydney University, Broadway, Leichhardt and Newtown which are just around the corner.

** images used maybe indicatives only**

2 2 2

Price

LEVEL 11 | DEPOSIT
TAKEN

**Property
Type**

Rental

Property ID 6455

Agent Details

Tammy (Rungnapa) Kanittanon - 0431
511 907 tammy@greenciff.com.au

Office Details

Greenciff Camperdown Office
Shop 1 1 Sterling Cct Camperdown NSW
2050 Australia
02 8262 8262

greenciff
Inner city specialists

The above information provided has been furnished to us by the vendor/s. We have not verified whether or not that information is accurate and do not have any belief in one way or the other in its accuracy. We do not accept any responsibility to any person for its accuracy and do no more than pass it on. All interested parties should make and rely upon their own inquiries in order to determine whether or not this information is in fact accurate.