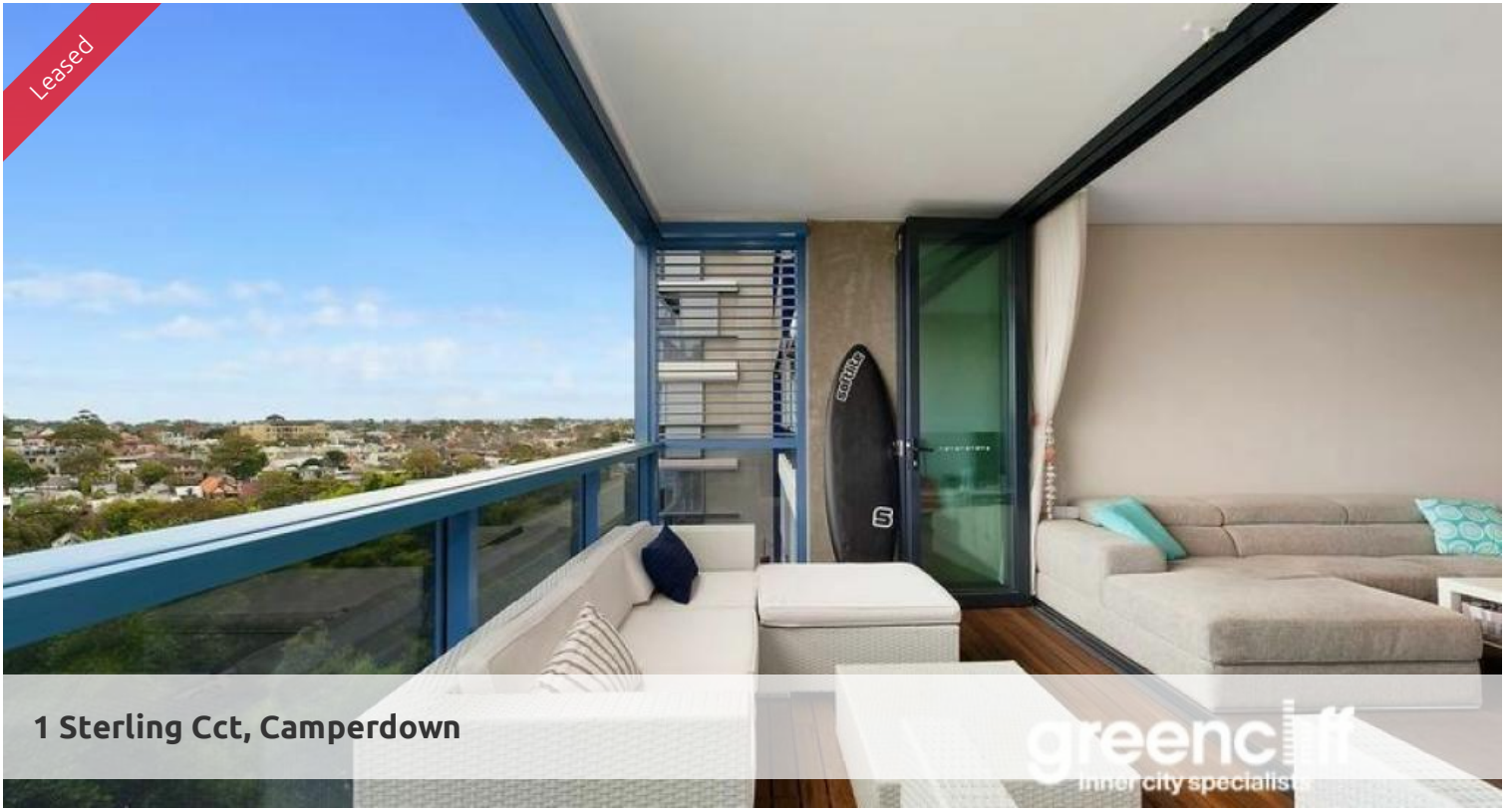


Leased



1 Sterling Cct, Camperdown

greenciff
Inner city specialists



MODERN ONE BEDROOM WITH VIEWS AND PARKING

Stunning west facing one bedroom apartment available on level 10 of the sought after Trio complex. Open the bi fold doors between the living room and the loggia to create an extended living and entertainment area.

Features of this apartment include:

- Well appointed living space combined with dining and air conditioning
- Gourmet kitchen with stainless steel appliances including dishwasher and microwave
- Large bedroom with built in wardrobes
- Modern bathroom with separate shower and bath, internal laundry
- Large balcony with stunning district views, shutters
- One security parking space and storage , lift access, visitor parking

Being in The City Quarter Complex you will be able to enjoy the free, unlimited access to your choice of a 50 m outdoor or 25m indoor pool and two gymnasiums. The complex also has 24 hour security and restaurants.

Only a 10 minute bus ride to the city or an easy stroll to Glebe, Broadway, Leichhardt, Tramsheds and Newtown which are just around the corner. 7 minutes to the University of Sydney, Chippendale UTS and much more.

*** images are indicative***

🛏 1 🗺 1 🚗 1

Price LEVEL 10 | \$780 PW | LEASED AT FIRST OPEN

Property Type Rental

Property ID 6441

Agent Details

Tammy (Rungnapa) Kanittanon - 0431 511 907 tammy@greenciff.com.au

Office Details

Greenciff Camperdown Office
Shop 1 1 Sterling Cct Camperdown NSW
2050 Australia
02 8262 8262

greenciff
Inner city specialists