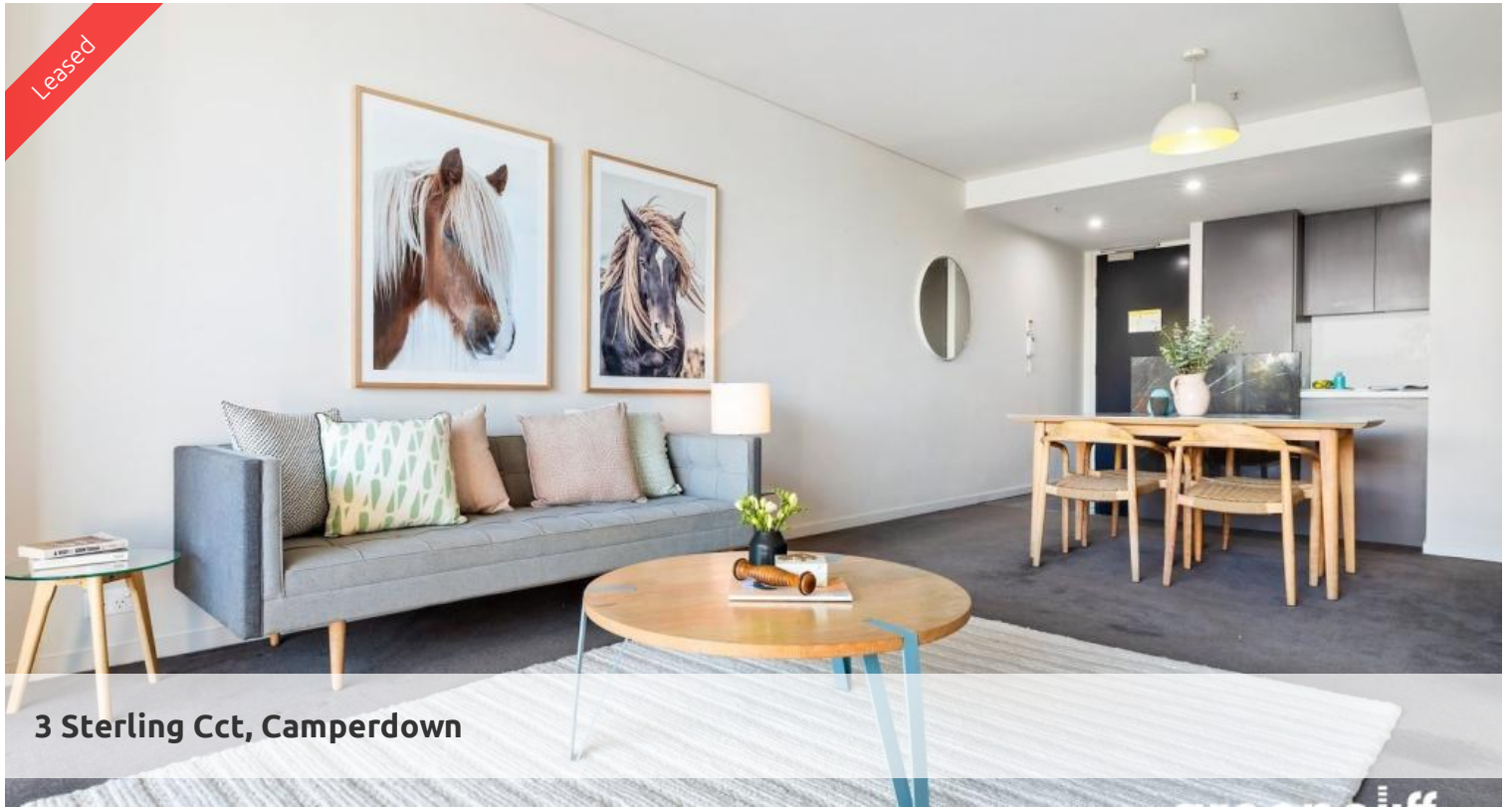
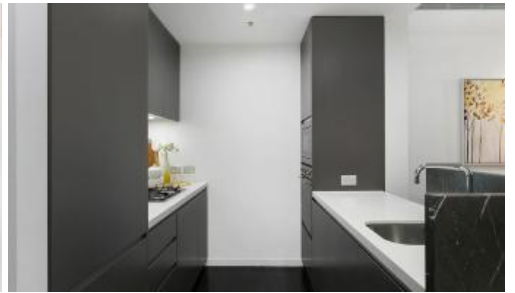


Leased



3 Sterling Cct, Camperdown



GREAT LOCATION! ONE BEDROOM APARTMENT WITH PARKING

Stunning one bedroom apartment available on level 2 of the sought after TRIO complex. Open the bi fold doors between the living room and the loggia to create an extended living and entertainment area.

Features of this apartment include:

- Ultra modern kitchen with gas cook top, dishwasher and microwave
- Spacious living area flowing to generous timber decked loggia
- Internal laundry with a clothes dryer
- Sleek bathroom with separate bath and shower
- Spacious bedroom with built-in robes, tranquil leafy outlook
- Superb finishes throughout, reverse cycle air conditioning
- Security building with lift, storage and car space

Being in The City Quarter Complex you will be able to enjoy the free, unlimited access to your choice of a 50 metre outdoor or 25m indoor pool and two gymnasiums. The complex also has 24 hour security and restaurants.

Only a 10 minute bus ride to the city or an easy stroll to Tramsheds, Jubilee park, Glebe, RPA hospital, Sydney University, Broadway, Leichhardt and Newtown which are just around the corner.

Video link: <https://www.youtube.com/shorts/isWWVpocFQ>

** images used maybe indicatives only**

🛏 1 📶 1 🚗 1

Price LEVEL 2 | \$750 PW | LEASED AT FIRST OPEN

Property Type Rental

Property ID 6427

Agent Details

Tammy (Rungnapa) Kanittanon - 0431 511 907 tammy@greycliff.com.au

Office Details

Greycliff Camperdown Office
Shop 1 1 Sterling Cct Camperdown NSW
2050 Australia
02 8262 8262

greenciff
Inner city specialists

The above information provided has been furnished to us by the vendor/s. We have not verified whether or not that information is accurate and do not have any belief in one way or the other in its accuracy. We do not accept any responsibility to any person for its accuracy and do no more than pass it on. All interested parties should make and rely upon their own inquiries in order to determine whether or not this information is in fact accurate.