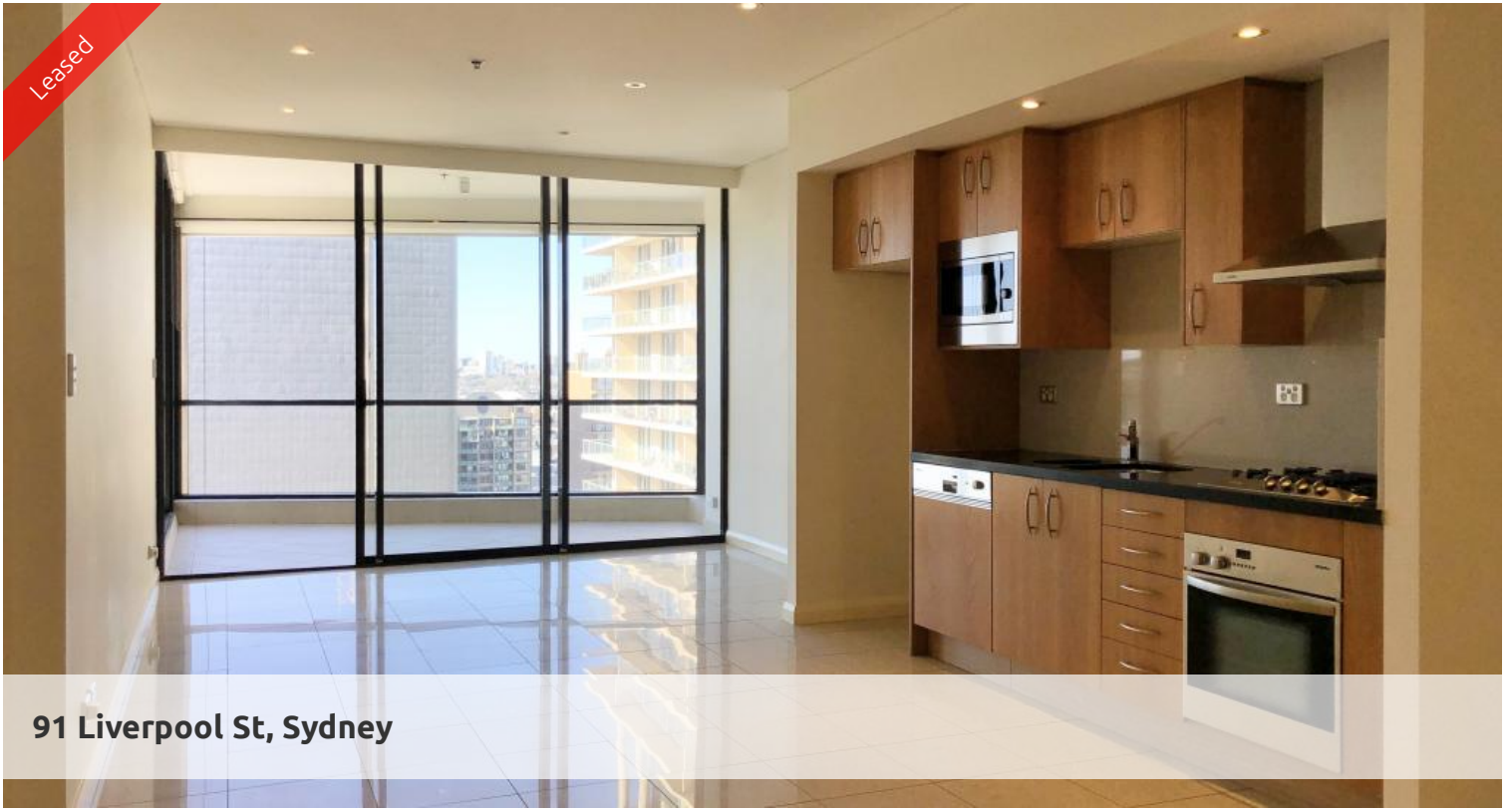


Leased



91 Liverpool St, Sydney



### World Tower - perfect city pad

With cafes, eateries, shops and transportations at door - World Tower has the ultimate city convenience for the busy executives.

#### The apartment

- Spacious one unfurnished bedroom with built in robe
- Large study room
- Allocated parking space
- Large entertaining balcony overlooking the city skylines
- Fully tiled to living areas and carpet to bedroom
- European Miele appliances
- Internal laundry with dryer

#### The building

- A 25 m heated indoor lap pool
- Integrated spa, sauna, and fully equipped gym
- 24 hour security and On-site building manager

 1  1  1

#### Price

Level 42 | \$900 PW | Deposit Taken

#### Property Type

Rental

Property ID6407

#### Agent Details

Tammy (Rungnapa) Kanittanon - 0431 511 907 tammy@greenciff.com.au

#### Office Details

Greenciff Sydney Kent St  
Level 10/488 Kent Street Sydney NSW  
2000 Australia  
02 8823 8818

The above information provided has been furnished to us by the vendor/s. We have not verified whether or not that information is accurate and do not have any belief in one way or the other in its accuracy. We do not accept any responsibility to any person for its accuracy and do no more than pass it on. All interested parties should make and rely upon their own inquiries in order to determine whether or not this information is in fact accurate.

**greenciff**  
Inner city specialists