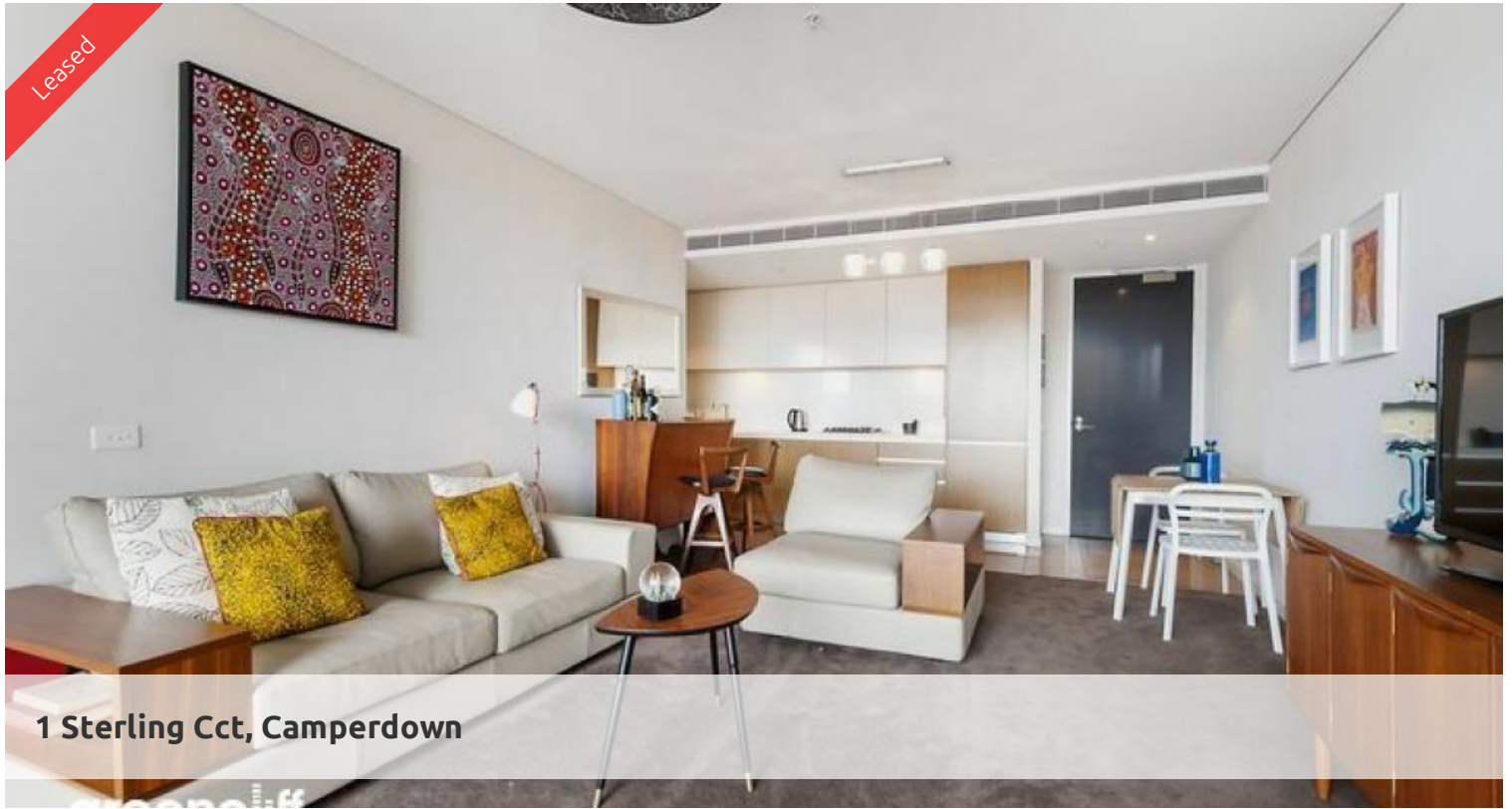


Leased



1 Sterling Cct, Camperdown



ONE BEDROOM PLUS STUDY RESIDENCE

Capturing a panoramic westerly district view, this oversized one bedroom plus study designer apartment offers resort style living in a walk-to-everywhere location. It is set in the award winning 'Trio' building, with cafes and shops a walk away. It features:

- Breathtaking district views
- Immaculately presented, with study nook
- Spacious living, walk through bathroom with bath tub, well appointed large bedroom
- Spacious entertaining deck, with power, gas and water outlets, bi fold doors
- CaesarStone kitchen equipped with European appliances
- Ducted air conditioning throughout, internal laundry
- 50-meter outdoor lap pool and 25 meter indoor pool
- Two gymnasiums, restaurants
- Visitor parking, on-site building manager, 24 hour security
- Lift access to secure basement parking, lock up storage
- Close to the RPAH, Sydney Uni, city buses and light rail

* images indicative *

The above information provided has been furnished to us by the vendor/s. We have not verified whether or not that information is accurate and do not have any belief in one way or the other in its accuracy. We do not accept any responsibility to any person for its accuracy and do no more than pass it on. All interested parties should make and rely upon their own inquiries in order to determine whether or not this information is in fact accurate.

🛏 1 📶 1 🚗 1

Price LEVEL 11 | \$730 PW | LEASED
AT FIRST INSPECTION

Property Type Rental
Property ID 6388

Agent Details

Tammy (Rungnapa) Kanittanon - 0431
511 907 tammy@greenciff.com.au

Office Details

Greenciff Camperdown Office
Shop 1 1 Sterling Cct Camperdown NSW
2050 Australia
02 8262 8262

greenciff
Inner city specialists