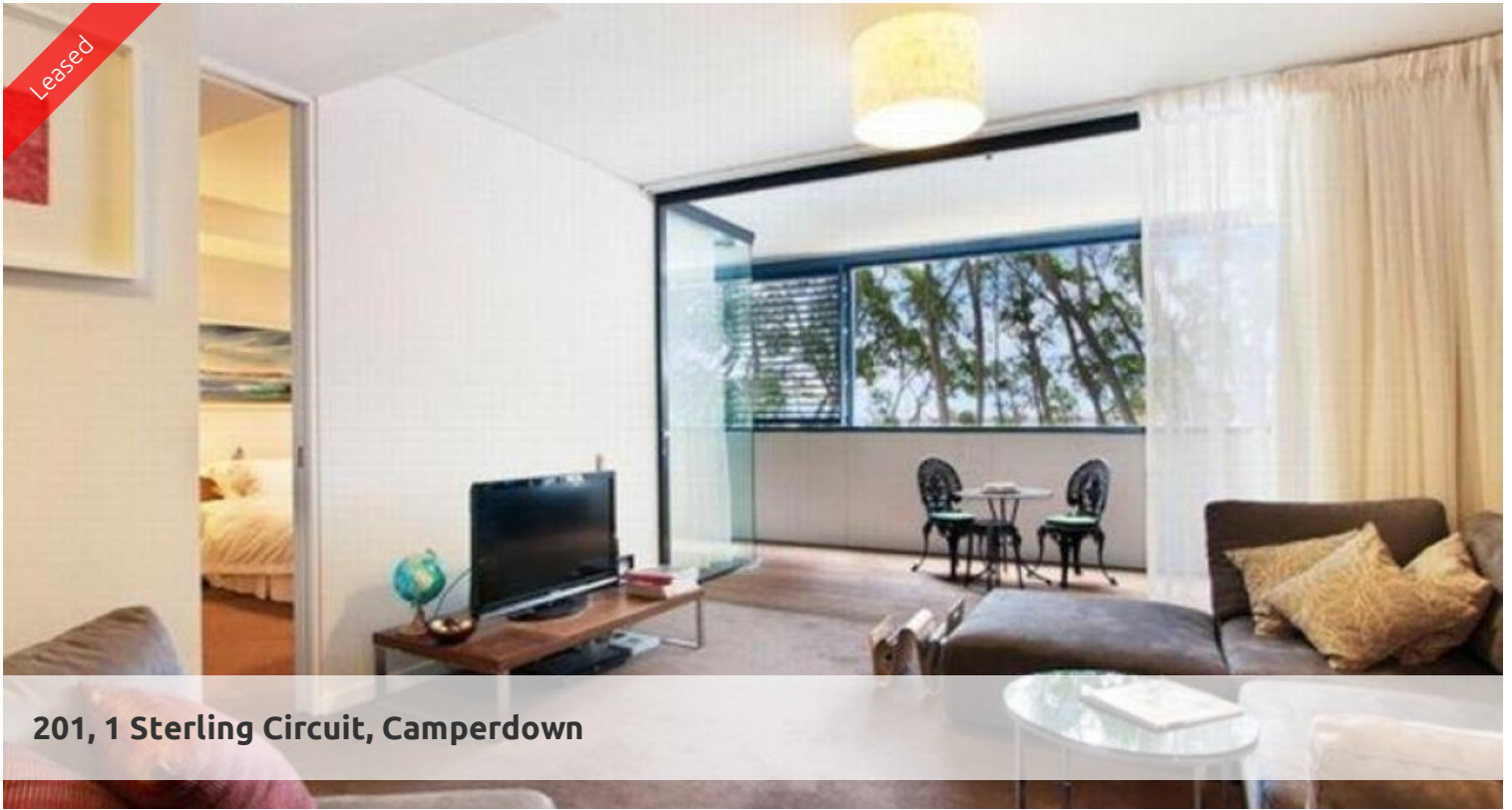


Leased



201, 1 Sterling Circuit, Camperdown



Greycliff Agency @



SPACIOUS ONE BEDROOM APARTMENT IN TRIO!

Stunning one bedroom apartment available on level 2 of the sought after Trio complex. Open the bi fold doors between the living room and the loggia to create an extended living and entertainment area.

Features of this apartment include:

- Large bedroom with built in wardrobes
- Gourmet kitchen with stainless steel SMEG appliances including dishwasher
- Modern bathroom with step less shower and bath
- Internal laundry with a clothes dryer
- Designer lights and window furnishings
- One security parking space.
- Two bicycle storage cages
- Ducted AC in living & bedroom

Being in The City Quarter Complex you will be able to enjoy the free, unlimited access to your choice of a 50 metre outdoor or 25m indoor pool and two gymnasiums. The complex also has 24 hour security, a Japanese restaurant, cafe & convenience store.

Only a 10 minute bus ride to the city or an easy stroll to Glebe, Broadway, Leichhardt and Newtown which are just around the corner.

The above information provided has been furnished to us by the vendor/s. We have not verified whether or not that information is accurate and do not have any belief in one way or the other in its accuracy. We do not accept any responsibility to any person for its accuracy and do no more than pass it on. All interested parties should make and rely upon their own inquiries in order to determine whether or not this information is in fact accurate.

🛏 1 📶 1 🚗 1

Price

P.O.A.

Property Type

Rental

Property ID

637

Agent Details

William Chen - 0430 026 436

william@greycliff.com.au

Office Details

Greycliff Sydney Kent St

Level 10/488 Kent Street Sydney NSW

2000 Australia

02 8823 8818

greycliff
Inner city specialists