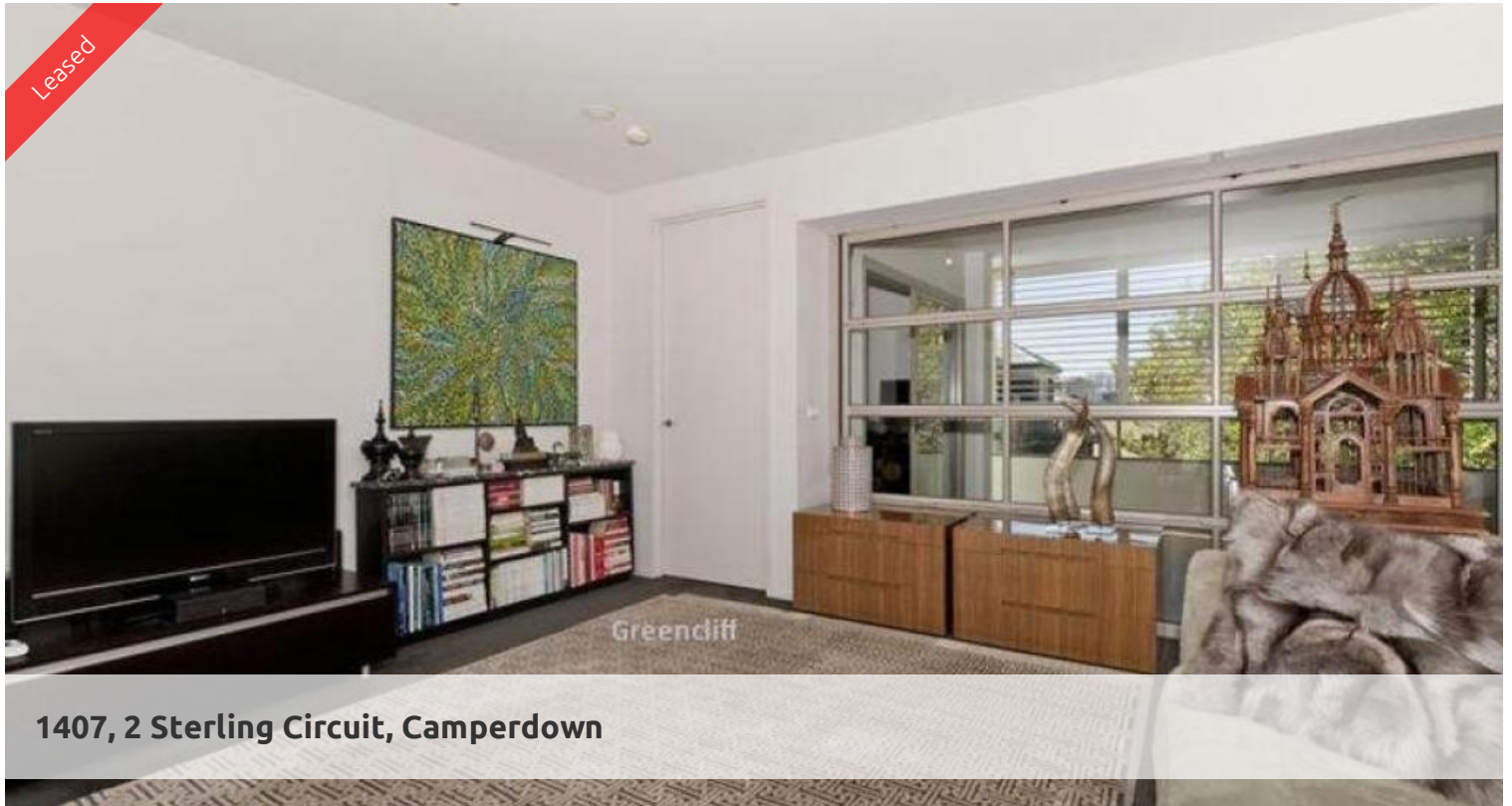


Leased



1407, 2 Sterling Circuit, Camperdown



## ONE BEDROOM APARTMENT WITH PARKING

Superb, spacious one bedroom apartment perfectly positioned on the 4th floor of Vie 1 within the sought after City Quarter Complex.

Boasting a tranquil leafy outlook, features include:

- Spacious living area flowing to huge balcony, ideal for alfresco entertaining
- Ultra modern open plan kitchen with gas cooktop and dishwasher
- Sleek walk through bathroom with separate bath and shower
- Generous bedroom with built in wardrobes
- Concealed internal laundry with dryer
- Security building and car space

Superbly located within the City Quarter complex, comprising of 50 metre outdoor pool, 25m indoor pool, two gymnasiums and the added convenience of 24 hour security, restaurant, café and convenience store. All a short bus ride from the city or an easy stroll to Annandale shopping village, Glebe, Broadway, Leichhardt and Newtown, all just around the corner.

Please call Miki on 8262 8262 for an inspection.

The above information provided has been furnished to us by the vendor/s. We have not verified whether or not that information is accurate and do not have any belief in one way or the other in its accuracy. We do not accept any responsibility to any person for its accuracy and do no more than pass it on. All interested parties should make and rely upon their own inquiries in order to determine whether or not this information is in fact accurate.

🛏 1 📶 1 🚗 1

**Price**

P.O.A.

**Property Type**

Rental

**Property ID**

636

### Agent Details

William Chen - 0430 026 436

[william@greendiff.com.au](mailto:william@greendiff.com.au)

### Office Details

Greendiff Sydney Kent St

Level 10/488 Kent Street Sydney NSW

2000 Australia

02 8823 8818

**greendiff**  
Inner city specialists