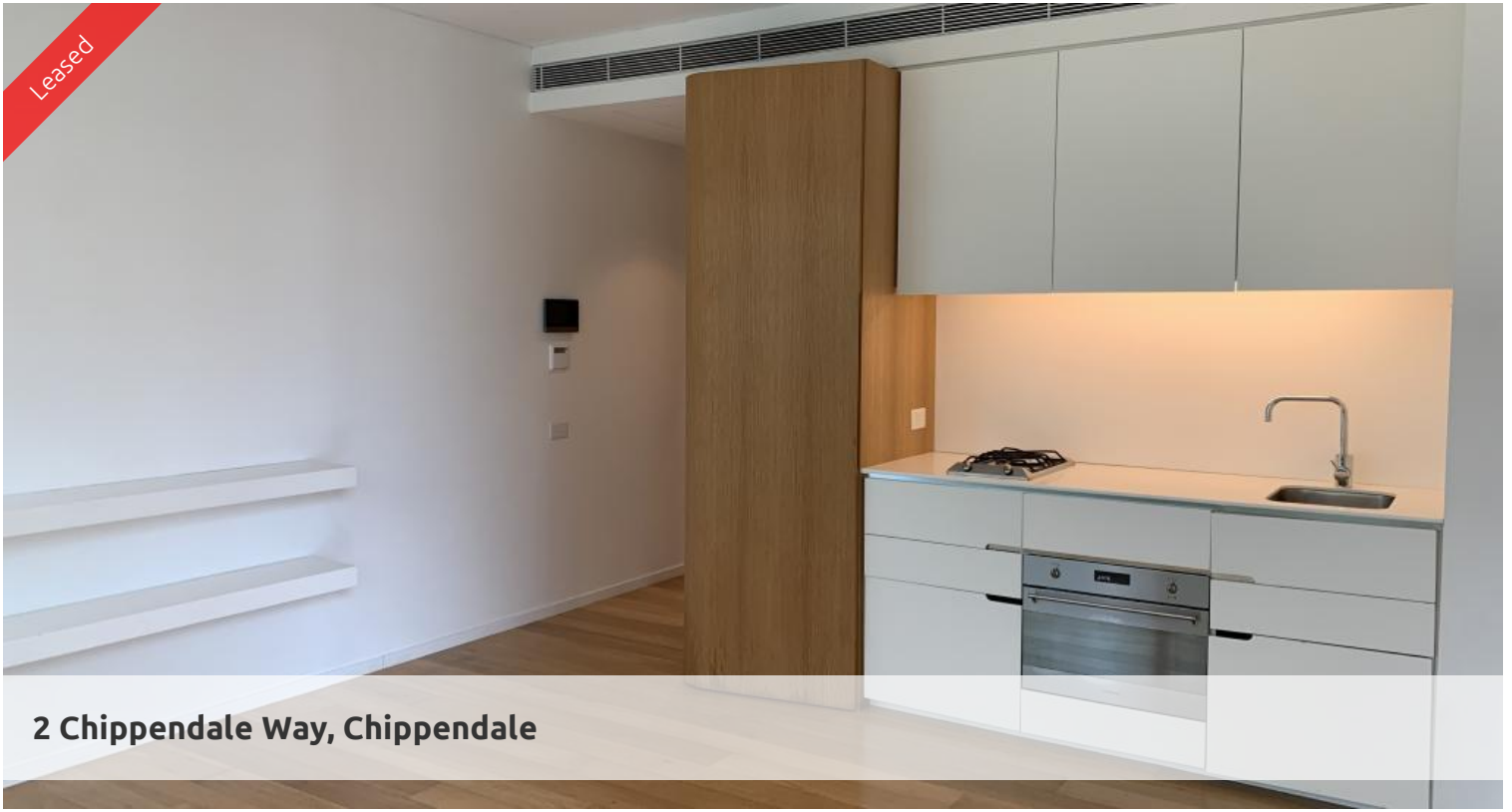


Leased



## 2 Chippendale Way, Chippendale



### MODERN ONE BEDROOM SUITE IN CENTRAL PARK

**Please meet at our office at 5 Carlton St, Chippendale a few minutes before to register and inspect.**

One Central Park is inner city living at its best!

Enjoy the convenience of shopping, entertainment, dining and transport right at your doorstep. Built around a beautiful park and draped in a living vertical garden, One Central Park is the perfect combination of luxury meeting nature.

Rich in amenities, this Central Park development features:

- Near new luxury apartments with stainless steel appliances
- Timber /Tiled floor
- Security building with 24 hour concierge
- Fitness centre with pool, gymnasium & spa
- 6 star green rated development
- 5 level shopping centre with Woolworths
- City, district or park views from all apartments
- Storage included
- Fridge and washer/dryer included

 1  1

**Price**

Level 13 | DEPOSIT TAKEN -  
INSPECTION CANCELED

**Property  
Type**

Rental

**Property  
ID**

6351

#### Agent Details

Daniel Ho - 0424 089 868  
daniel@greenciff.com.au

#### Office Details

Greenciff Central Park Office  
101/5 Carlton Street Chippendale NSW  
2008 Australia  
02 9199 6555

**greenciff**  
Inner city specialists