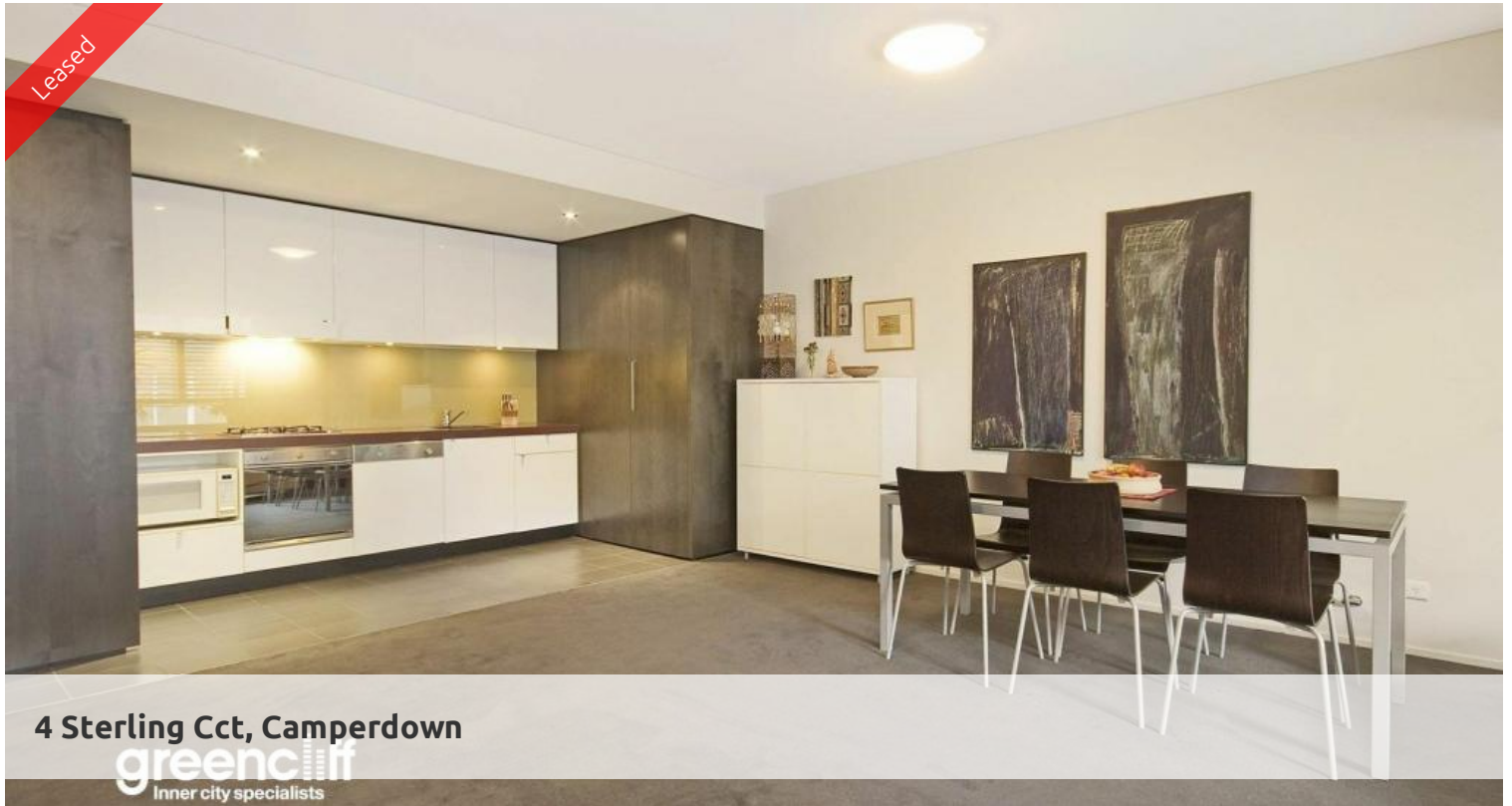


Leased



4 Sterling Cct, Camperdown

greenciff
Inner city specialists



ONE BEDROOM APARTMENT WITH GARDEN VIEWS

Superbly positioned within "Vie 2" is this fabulous one bedroom apartment boasting a tranquil leafy outlook. Features include:

- Modern open plan kitchen with gas cook top and dishwasher
- Sleek walk through bathroom, separate bath and shower
- Spacious combined lounge / dining area, internal laundry facilities
- Generous bedroom with built-in wardrobes, loads of storage
- Lovely balcony with leafy outlook, ideal for alfresco entertaining
- Near new paint

Being in The City Quarter Complex you will be able to enjoy the free, unlimited access to your choice of a 50 meter outdoor or 25m indoor pool and two gymnasiums. The complex also has 24 hour security and restaurants.

Only a 10 minute bus ride to the city or an easy stroll to Glebe, Tramsheds, Jubilee Park, Broadway, Leichhardt and Newtown which are just around the corner.

NOTE: Please wear a face mask at inspection

** images used maybe indicatives only **

🛏 1 🏠 1

Price

LEVEL 2 | OPEN HOUSE
CANCELLED | DEPOSIT TAKEN

Property Type

Rental

Property ID

6345

Agent Details

Tammy (Rungnapa) Kanittanon - 0431 511 907 tammy@greenciff.com.au

Office Details

Greenciff Camperdown Office
Shop 1 1 Sterling Cct Camperdown NSW
2050 Australia
02 8262 8262

The above information provided has been furnished to us by the vendor/s. We have not verified whether or not that information is accurate and do not have any belief in one way or the other in its accuracy. We do not accept any responsibility to any person for its accuracy and do no more than pass it on. All interested parties should make and rely upon their own inquiries in order to determine whether or not this information is in fact accurate.

greenciff
Inner city specialists