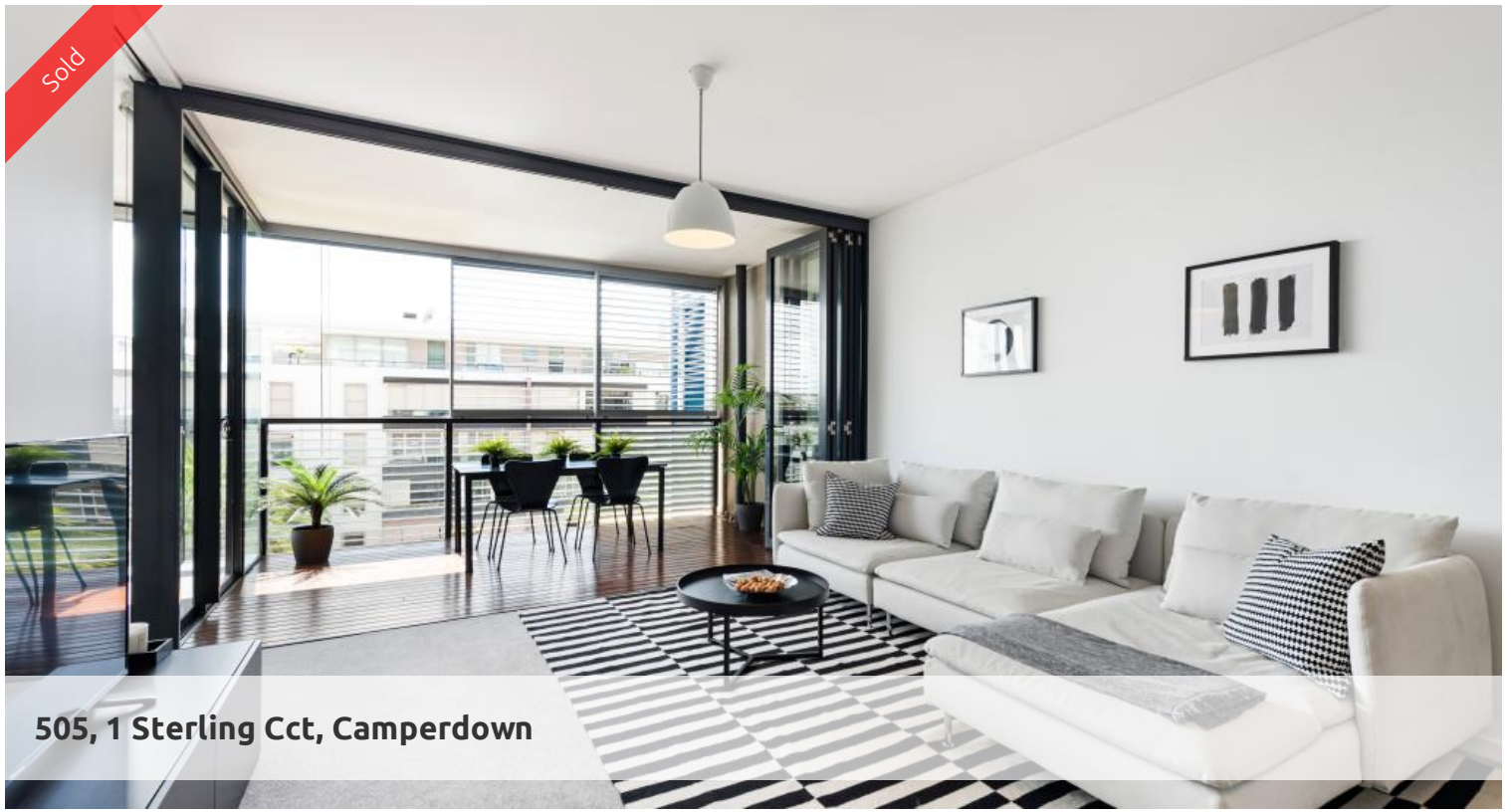


Sold



505, 1 Sterling Cct, Camperdown



## Tranquil Apartment Living in the Inner West

Situated on level 5 of Trio, facing East towards the city enjoy the morning sun from your apartment away from any roads in the heart of the City Quarter complex.

This apartment boasts light filled interiors, with a large modern open plan layout, completed with lush green views of the park and 50m outdoor swimming pool.

Open up your apartment with floor to ceiling bi fold doors onto a generous loggia space with gas and electricity connections, perfect for entertaining.

True resort style living at its finest with access to 2 pools and 2 gyms, cafe and Japanese restaurant on site.

Close to Sydney University and few minutes stroll to a huge array of entertainment and dining options through Annandale, Newtown and the Tram Sheds.

- Beautifully designed living space and loggia perfect for entertaining.
- Split system ducted air conditioning
- Designer kitchen with 4 burner gas cook top, dishwasher and Smeg appliances
- Large bedroom with built in wardrobe
- Security building with security on site 24 hours
- Building Manager on site
- Close to Public Transport

Outgoings per quarter (Approx):

- Strata Fees \$1,400

🛏 1 📶 1 🚗 1 📏 98 m2

**Price** SOLD for \$875,000  
**Property Type** Residential  
**Property ID** 6267  
**Land Area** 98 m2

### Agent Details

Emlyn Walters - 0405 606 025  
emlyn@greenciff.com.au

### Office Details

Greenciff Camperdown Office  
Shop 1 1 Sterling Cct Camperdown NSW  
2050 Australia  
02 8262 8262

**greenciff**  
Inner city specialists