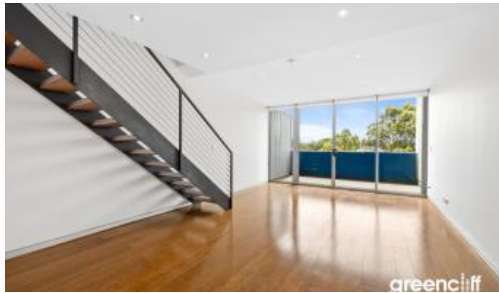


Leased



**M403, 68 Mcevoy St, Alexandria**



## Amazing dual-level apartment within trendy inner-city locale

This sundrenched apartment is ideally set on the 4th level of a security complex. Dual leveled and showcase a generously sized two-bedroom design with city skyline views, sleeping zones upstairs and living zones downstairs leading to a fabulous sundrenched balcony.

An ultra-central address, with just steps to Green Square Station and buses at the door. Choice of cafes and restaurants a short stroll away and much much more

- Open plan interiors boasting effortless indoor to outdoor living
- Stylish kitchen featuring a gas cooktop, dishwasher, breakfast bar
- Bedrooms with mirrored built-ins and own balconies, master with ensuite
- Modern bathroom with combined tub/shower, internal laundry
- Intercom, lift access, plus a basement car space
- No air-conditioning in the apartment

🛏 2 🚿 2 🚗 1

### Price

Centrally located | \$800 PW -  
DEPOSIT TAKEN

### Property Type

Rental

### Property ID

6260

### Agent Details

Lieu Mai - 0415 797 525  
lieu@greenciff.com.au

### Office Details

Greenciff Sydney Kent St  
Level 10/488 Kent Street Sydney NSW  
2000 Australia  
02 8823 8818

The above information provided has been furnished to us by the vendor/s. We have not verified whether or not that information is accurate and do not have any belief in one way or the other in its accuracy. We do not accept any responsibility to any person for its accuracy and do no more than pass it on. All interested parties should make and rely upon their own inquiries in order to determine whether or not this information is in fact accurate.

**greenciff**  
Inner city specialists