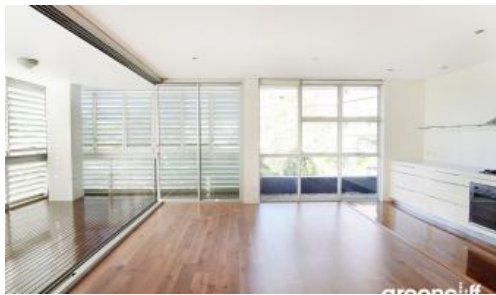


Leased



4 Alexandra Dr, Camperdown



"AQUILON" NORTH FACING TWO BEDROOM APARTMENT WITH PARKING

Perfectly positioned within sought after "Aquilon" is this lovely north facing two bedroom apartment. Features include:

- Ultra modern open plan kitchen, spacious living area
- Spacious timber decked loggia, ideal for alfresco dining
- Generous bedrooms, both with built-in wardrobes
- Two sleek bathrooms, en-suite off master bedroom
- Light and airy throughout, internal laundry facilities
- Security building with lift and security car space

Being in The City Quarter Complex you will be able to enjoy the free, unlimited access to your choice of a 50 metre outdoor or 25m indoor pool and two gymnasiums. The complex also has 24 hour security, a Japanese restaurant & cafes.

Only a 10 minute bus ride to the city or an easy stroll to Tramsheds, Jubilee park, Glebe, RPA hospital, Sydney University, Broadway, Leichhardt and Newtown which are just around the corner.

For further information or to inspect, please contact Tammy on 0431 511 907 or email: tammy@greencliff.com.au

The above information provided has been furnished to us by the vendor/s. We have not verified whether or not that information is accurate and do not have any belief in one way or the other in its accuracy. We do not accept any responsibility to any person for its accuracy and do no more than pass it on. All interested parties should make and rely upon their own inquiries in order to determine whether or not this information is in fact accurate.

 2  2  1

Price LEASED AT FIRST OPEN

Property Type Rental

Property ID 6254

Agent Details

Tammy (Rungnapa) Kanittanon - 0431 511 907
tammy@greencliff.com.au

Office Details

Greencliff Camperdown Office
Shop 1 1 Sterling Cct Camperdown NSW
2050 Australia
02 8262 8262

greenc  **ff**
Inner city specialists