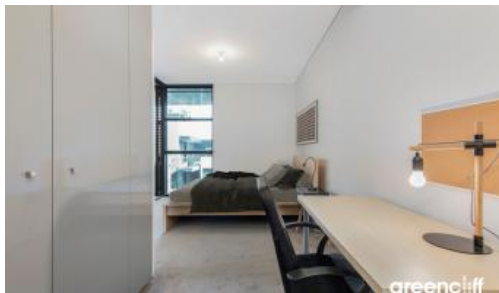


Sold



810, 8 Park Lane, Chippendale



One Bedroom Apartment Located in the Heart of Central Park

Boasting a central location in the heart of Central Park, this designer one bedroom apartment offers absolute convenience and access to an abundance amenities at your doorstep.

Enjoy open plan living and dining, with a full sized kitchen, appointed with Smeg appliances that flows seamlessly onto an open balcony. Spacious bedroom offers ample storage space with a study nook coupled with a generously sized ensuite attached.

Rich in amenities, this Central Park apartment features:

- Full sized kitchen with stainless steel appliances
- Award winning modern design
- Elegant finishes, with both timber and carpet flooring
- Generously sized balcony
- Secure storage cage
- Security building with 24 hour concierge
- Fitness centre with heated pool, commercial sized gym & spa
- 6 star green rated development
- 5 level shopping centre with Woolworths

This apartment offers an abundance of amenities right at your doorstep. Step right

🛏 1 🏠 1 📏 50 m²

Price	SOLD for \$710,000
Property Type	Residential
Property ID	6230
Land Area	50 m ²

Agent Details

Emlyn Walters - 0405 606 025
emlyn@greenciff.com.au
William Chen - 0430 026 436
william@greenciff.com.au

Office Details

Greenciff Central Park Office
101/5 Carlton Street Chippendale NSW
2008 Australia
02 9199 6555

greenciff
Inner city specialists