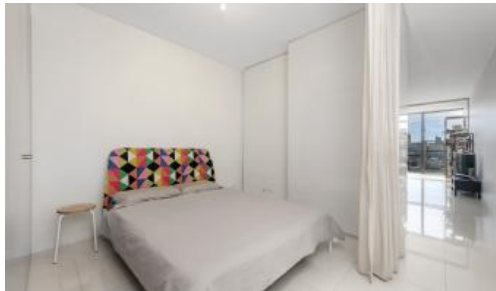


Sold



1205, 18 Park Lane, Chippendale



Stamp Duty Exemption for First Home Buyers

Largest One Bed Suite in Central Park! 50 sqm!

Located in the heart of Central Park, this one bedroom suite is perfect for first home buyers looking to occupy an expansive city pad, or for astute investors looking to capitalise on the strong Central Park rental market.

Conveniently located, this apartment is a short stroll to a collection of shopping, entertainment, dining, bars and galleries.

Rich in amenities, The MARK building features:

- High floor to ceiling windows
- Enclosed balcony
- Built-in wardrobes
- Luxury modern kitchen with stainless steel appliances
- Secure building with 24-hour concierge
- Fitness centre with pool, gymnasium & spa
- Pets allowed
- Note: separate car space is available to buy or to rent.

🛏 1 📶 1 🏠 50 m²

Price	SOLD
Property Type	Residential
Property ID	6174
Land Area	50 m ²

Agent Details

William Chen - 0430 026 436
william@greenciff.com.au
Danny Yeung - 0451 836 388
danny@greenciff.com.au

Office Details

Greenciff Central Park Office
101/5 Carlton Street Chippendale NSW
2008 Australia
02 9199 6555

greenciff
Inner city specialists